

## Test Report

No.: ETR21B00692

Date: 10-Nov-2021

Page: 1 of 16

SHINKO ELECTRIC INDUSTRIES CO., LTD.  
80 OSHIMADA-MACHI, NAGANO-SHI, 381-2287 JAPAN

The following sample(s) was/were submitted and identified by/on behalf of the applicant as:

Sample Submitted By : SHINKO ELECTRIC INDUSTRIES CO., LTD.  
Sample Name : CDA194+Ag

Sample Receiving Date : 03-Nov-2021  
Testing Period : 03-Nov-2021 to 10-Nov-2021

Test Requested : (1) As specified by client, with reference to RoHS 2011/65/EU Annex II and amending Directive (EU) 2015/863 to determine Cadmium, Lead, Mercury, Cr(VI), PBBs, PBDEs, DBP, BBP, DEHP, DIBP contents in the submitted sample(s).  
(2) Please refer to next pages for the other item(s).

Test Results : Please refer to following pages.

Conclusion : (1) Based on the performed tests on submitted sample(s), the test results of Cadmium, Lead, Mercury, Cr(VI), PBBs, PBDEs, DBP, BBP, DEHP, DIBP comply with the limits as set by RoHS Directive (EU) 2015/863 amending Annex II to Directive 2011/65/EU.

  
Troy Chang, Manager  
Signed for and on behalf of  
SGS TAIWAN LTD.  
Chemical Laboratory - Taipei



PIN CODE: 3549FEAF

This document is issued by the Company subject to its General Conditions of Service printed overleaf, available on request or accessible at <https://www.sgs.com.tw/terms-of-service> and, for electronic format documents, subject to Terms and Conditions for Electronic Documents at <https://www.sgs.com.tw/terms-of-service>. Attention is drawn to the limitation of liability, indemnification and jurisdiction issues defined therein. Any holder of this document is advised that information contained hereon reflects the Company's findings at the time of its intervention only and within the limits of client's instruction, if any. The Company's sole responsibility is to its Client and this document does not exonerate parties to a transaction from exercising all their rights and obligations under the transaction documents. This document cannot be reproduced, except in full, without prior written approval of the Company. Any unauthorized alteration, forgery or falsification of the content or appearance of this document is unlawful and offenders may be prosecuted to the fullest extent of the law. Unless otherwise stated the results shown in this test report refer only to the sample(s) tested.

# Test Report

No.: ETR21B00692

Date: 10-Nov-2021

Page: 2 of 16

SHINKO ELECTRIC INDUSTRIES CO., LTD.  
80 OSHIMADA-MACHI, NAGANO-SHI, 381-2287 JAPAN

## Test Part Description

No.1 : COPPER/SILVER COLORED METAL (INCLUDING THE PLATING LAYER)

## Test Result(s)

Test Item(s)	Method	Unit	MDL	Result	Limit
				No.1	
Cadmium (Cd) (CAS No.: 7440-43-9)	With reference to IEC 62321-5: 2013, analysis was performed by ICP-OES.	mg/kg	2	n.d.	100
Lead (Pb) (CAS No.: 7439-92-1)		mg/kg	2	6.04	1000
Mercury (Hg) (CAS No.: 7439-97-6)	With reference to IEC 62321-4: 2013+AMD1: 2017, analysis was performed by ICP-OES.	mg/kg	2	n.d.	1000
Hexavalent Chromium Cr(VI) (CAS No.: 18540-29-9) (#2)	With reference to IEC 62321-7-1: 2015, analysis was performed by UV-VIS.	µg/cm <sup>2</sup>	0.1	n.d.	-
Monobromobiphenyl	With reference to IEC 62321-6: 2015, analysis was performed by GC/MS.	mg/kg	5	n.d.	-
Dibromobiphenyl		mg/kg	5	n.d.	-
Tribromobiphenyl		mg/kg	5	n.d.	-
Tetrabromobiphenyl		mg/kg	5	n.d.	-
Pentabromobiphenyl		mg/kg	5	n.d.	-
Hexabromobiphenyl		mg/kg	5	n.d.	-
Heptabromobiphenyl		mg/kg	5	n.d.	-
Octabromobiphenyl		mg/kg	5	n.d.	-
Nonabromobiphenyl		mg/kg	5	n.d.	-
Decabromobiphenyl		mg/kg	5	n.d.	-
<b>Sum of PBBs</b>		mg/kg	-	n.d.	1000
Monobromodiphenyl ether		mg/kg	5	n.d.	-
Dibromodiphenyl ether		mg/kg	5	n.d.	-
Tribromodiphenyl ether		mg/kg	5	n.d.	-
Tetrabromodiphenyl ether		mg/kg	5	n.d.	-
Pentabromodiphenyl ether		mg/kg	5	n.d.	-
Hexabromodiphenyl ether		mg/kg	5	n.d.	-
Heptabromodiphenyl ether		mg/kg	5	n.d.	-
Octabromodiphenyl ether		mg/kg	5	n.d.	-
Nonabromodiphenyl ether		mg/kg	5	n.d.	-
Decabromodiphenyl ether	mg/kg	5	n.d.	-	
<b>Sum of PBDEs</b>	mg/kg	-	n.d.	1000	

This document is issued by the Company subject to its General Conditions of Service printed overleaf, available on request or accessible at <https://www.sgs.com.tw/terms-of-service> and, for electronic format documents, subject to Terms and Conditions for Electronic Documents at <https://www.sgs.com.tw/terms-of-service>. Attention is drawn to the limitation of liability, indemnification and jurisdiction issues defined therein. Any holder of this document is advised that information contained hereon reflects the Company's findings at the time of its intervention only and within the limits of client's instruction, if any. The Company's sole responsibility is to its Client and this document does not exonerate parties to a transaction from exercising all their rights and obligations under the transaction documents. This document cannot be reproduced, except in full, without prior written approval of the Company. Any unauthorized alteration, forgery or falsification of the content or appearance of this document is unlawful and offenders may be prosecuted to the fullest extent of the law. Unless otherwise stated the results shown in this test report refer only to the sample(s) tested.

# Test Report

No.: ETR21B00692

Date: 10-Nov-2021

Page: 3 of 16

SHINKO ELECTRIC INDUSTRIES CO., LTD.  
80 OSHIMADA-MACHI, NAGANO-SHI, 381-2287 JAPAN

Test Item(s)	Method	Unit	MDL	Result	Limit
				No.1	
Butyl benzyl phthalate (BBP) (CAS No.: 85-68-7)	With reference to IEC 62321-8: 2017, analysis was performed by GC/MS.	mg/kg	50	n.d.	1000
Dibutyl phthalate (DBP) (CAS No.: 84-74-2)	With reference to IEC 62321-8: 2017, analysis was performed by GC/MS.	mg/kg	50	n.d.	1000
Di-(2-ethylhexyl) phthalate (DEHP) (CAS No.: 117-81-7)	With reference to IEC 62321-8: 2017, analysis was performed by GC/MS.	mg/kg	50	n.d.	1000
Diisobutyl phthalate (DIBP) (CAS No.: 84-69-5)	With reference to IEC 62321-8: 2017, analysis was performed by GC/MS.	mg/kg	50	n.d.	1000
Diisodecyl phthalate (DIDP) (CAS No.: 26761-40-0, 68515-49-1)	With reference to IEC 62321-8: 2017, analysis was performed by GC/MS.	mg/kg	50	n.d.	-
Diisononyl phthalate (DINP) (CAS No.: 28553-12-0, 68515-48-0)	With reference to IEC 62321-8: 2017, analysis was performed by GC/MS.	mg/kg	50	n.d.	-
Di-n-octyl phthalate (DNOP) (CAS No.: 117-84-0)	With reference to IEC 62321-8: 2017, analysis was performed by GC/MS.	mg/kg	50	n.d.	-
Di-n-pentyl phthalate (DNPP) (CAS No.: 131-18-0)	With reference to IEC 62321-8: 2017, analysis was performed by GC/MS.	mg/kg	50	n.d.	-
Di-n-hexyl phthalate (DNHP) (CAS No.: 84-75-3)	With reference to IEC 62321-8: 2017, analysis was performed by GC/MS.	mg/kg	50	n.d.	-
Bis(2-methoxyethyl) phthalate (DMEP) (CAS No.: 117-82-8)	With reference to IEC 62321-8: 2017, analysis was performed by GC/MS.	mg/kg	50	n.d.	-
Diisopentyl phthalate (DIPP) (CAS No.: 605-50-5)	With reference to IEC 62321-8: 2017, analysis was performed by GC/MS.	mg/kg	50	n.d.	-
1,2-Benzenedicarboxylic acid, di-C6-8-branched alkyl esters, C7-rich (DIHP) (CAS No.: 71888-89-6)	With reference to IEC 62321-8: 2017, analysis was performed by GC/MS.	mg/kg	50	n.d.	-
1,2-Benzenedicarboxylic acid, di-C7-11-branched and linear alkyl esters (DHNUP) (CAS No.: 68515-42-4)	With reference to IEC 62321-8: 2017, analysis was performed by GC/MS.	mg/kg	50	n.d.	-
Hexabromocyclododecane (HBCDD) and all major diastereoisomers identified ( $\alpha$ - HBCDD, $\beta$ - HBCDD, $\gamma$ - HBCDD) (CAS No.: 25637-99-4, 3194-55-6 (134237-51-7, 134237-50-6, 134237-52-8))	With reference to IEC 62321: 2008, analysis was performed by GC/MS.	mg/kg	5	n.d.	-
Fluorine (F) (CAS No.: 14762-94-8)	With reference to BS EN 14582: 2016, analysis was performed by IC.	mg/kg	50	n.d.	-

This document is issued by the Company subject to its General Conditions of Service printed overleaf, available on request or accessible at <https://www.sgs.com.tw/terms-of-service> and, for electronic format documents, subject to Terms and Conditions for Electronic Documents at <https://www.sgs.com.tw/terms-of-service>. Attention is drawn to the limitation of liability, indemnification and jurisdiction issues defined therein. Any holder of this document is advised that information contained hereon reflects the Company's findings at the time of its intervention only and within the limits of client's instruction, if any. The Company's sole responsibility is to its Client and this document does not exonerate parties to a transaction from exercising all their rights and obligations under the transaction documents. This document cannot be reproduced, except in full, without prior written approval of the Company. Any unauthorized alteration, forgery or falsification of the content or appearance of this document is unlawful and offenders may be prosecuted to the fullest extent of the law. Unless otherwise stated the results shown in this test report refer only to the sample(s) tested.

# Test Report

No.: ETR21B00692

Date: 10-Nov-2021

Page: 4 of 16

SHINKO ELECTRIC INDUSTRIES CO., LTD.  
80 OSHIMADA-MACHI, NAGANO-SHI, 381-2287 JAPAN

Test Item(s)	Method	Unit	MDL	Result	Limit
				No.1	
Chlorine (Cl) (CAS No.: 22537-15-1)	With reference to BS EN 14582: 2016, analysis was performed by IC.	mg/kg	50	n.d.	-
Bromine (Br) (CAS No.: 10097-32-2)	With reference to BS EN 14582: 2016, analysis was performed by IC.	mg/kg	50	n.d.	-
Iodine (I) (CAS No.: 14362-44-8)	With reference to BS EN 14582: 2016, analysis was performed by IC.	mg/kg	50	n.d.	-
PFOS and its salts (CAS No.: 1763-23-1 and its salts)	With reference to CEN/TS 15968: 2010, analysis was performed by LC/MS/MS.	mg/kg	0.01	n.d.	-
PFOA and its salts (CAS No.: 335-67-1 and its salts)	With reference to CEN/TS 15968: 2010, analysis was performed by LC/MS/MS.	mg/kg	0.01	n.d.	-
Polychlorinated biphenyls (PCBs)	With reference to US EPA 3550C: 2007, analysis was performed by GC/MS.	mg/kg	0.5	n.d.	-
Polychlorinated naphthalene (PCNs)	With reference to US EPA 3550C: 2007, analysis was performed by GC/MS.	mg/kg	5	n.d.	-
Polychlorinated terphenyls (PCTs)	With reference to US EPA 3550C: 2007, analysis was performed by GC/MS.	mg/kg	0.5	n.d.	-
Short Chain Chlorinated Paraffins(C10-C13) (SCCP) (CAS No.: 85535-84-8)	With reference to ISO 18219: 2015, analysis was performed by GC/MS.	mg/kg	50	n.d.	-
Tributyl tin (TBT)	With reference to ISO 17353: 2004, analysis was performed by GC/FPD.	mg/kg	0.03	n.d.	-
Bis(tributyltin) oxide (TBTO) (CAS No.: 56-35-9)	Calculated from the result of Tributyl Tin (TBT).	mg/kg	0.03▲	n.d.	-
Triphenyl tin (TPT)	With reference to ISO 17353: 2004, analysis was performed by GC/FPD.	mg/kg	0.03	n.d.	-
Dibutyl tin (DBT)	With reference to ISO 17353: 2004, analysis was performed by GC/FPD.	mg/kg	0.03	n.d.	-
Diocetyl tin (DOT)	With reference to ISO 17353: 2004, analysis was performed by GC/FPD.	mg/kg	0.03	n.d.	-
Polyvinyl chloride (PVC)	With reference to ASTM E1252: 2013, analysis was performed by FT-IR and Flame Test.	**	-	Negative	-

This document is issued by the Company subject to its General Conditions of Service printed overleaf, available on request or accessible at <https://www.sgs.com.tw/terms-of-service> and, for electronic format documents, subject to Terms and Conditions for Electronic Documents at <https://www.sgs.com.tw/terms-of-service>. Attention is drawn to the limitation of liability, indemnification and jurisdiction issues defined therein. Any holder of this document is advised that information contained hereon reflects the Company's findings at the time of its intervention only and within the limits of client's instruction, if any. The Company's sole responsibility is to its Client and this document does not exonerate parties to a transaction from exercising all their rights and obligations under the transaction documents. This document cannot be reproduced, except in full, without prior written approval of the Company. Any unauthorized alteration, forgery or falsification of the content or appearance of this document is unlawful and offenders may be prosecuted to the fullest extent of the law. Unless otherwise stated the results shown in this test report refer only to the sample(s) tested.

# Test Report

No.: ETR21B00692

Date: 10-Nov-2021

Page: 5 of 16

SHINKO ELECTRIC INDUSTRIES CO., LTD.  
80 OSHIMADA-MACHI, NAGANO-SHI, 381-2287 JAPAN

Test Item(s)	Method	Unit	MDL	Result	Limit
				No.1	
Antimony (Sb) (CAS No.: 7440-36-0)	With reference to US EPA 3052: 1996, analysis was performed by ICP-OES.	mg/kg	2	n.d.	-
Arsenic (As) (CAS No.: 7440-38-2)	With reference to US EPA 3052: 1996, analysis was performed by ICP-OES.	mg/kg	2	n.d.	-
Beryllium (Be) (CAS No.: 7440-41-7)	With reference to US EPA 3052: 1996, analysis was performed by ICP-OES.	mg/kg	2	n.d.	-

**Note :**

1. mg/kg = ppm ; 0.1wt% = 1000ppm
2. MDL = Method Detection Limit
3. n.d. = Not Detected ( Less than MDL)
4. "-" = Not Regulated
5. \*\*= Qualitative analysis (No Unit)
6. Negative = Undetectable ; Positive = Detectable
7. PFOS and its salts including :  
CAS No.: 29081-56-9, 2795-39-3, 29457-72-5, 70225-14-8, 56773-42-3, 251099-16-8, 307-35-7.
8. PFOA and its salts including :  
CAS No.: 3825-26-1, 335-95-5, 2395-00-8, 335-93-3, 335-66-0.
9. (#2) =
  - a. The sample is positive for Cr(VI) if the Cr(VI) concentration is greater than 0.13 µg/cm<sup>2</sup>. The sample coating is considered to contain Cr(VI).
  - b. The sample is negative for Cr(VI) if Cr(VI) is n.d. (concentration less than 0.10 µg/cm<sup>2</sup>). The coating is considered a non-Cr(VI) based coating
  - c. The result between 0.10 µg/cm<sup>2</sup> and 0.13 µg/cm<sup>2</sup> is considered to be inconclusive - unavoidable coating variations may influence the determination.
10. ▲ : The MDL was evaluated for element / tested substance.

Conversion Formula :  $AX = A \times F$

AX	A	F
Bis(tributyltin)oxide (TBTO)	Tributyl Tin (TBT)	1.024

Parameter Conversion Table : [https://ecloud.sgs.com/Region\\_TW/DocDownload.aspx#otherDoc](https://ecloud.sgs.com/Region_TW/DocDownload.aspx#otherDoc)

11. The statement of compliance conformity is based on comparison of testing results and limits.

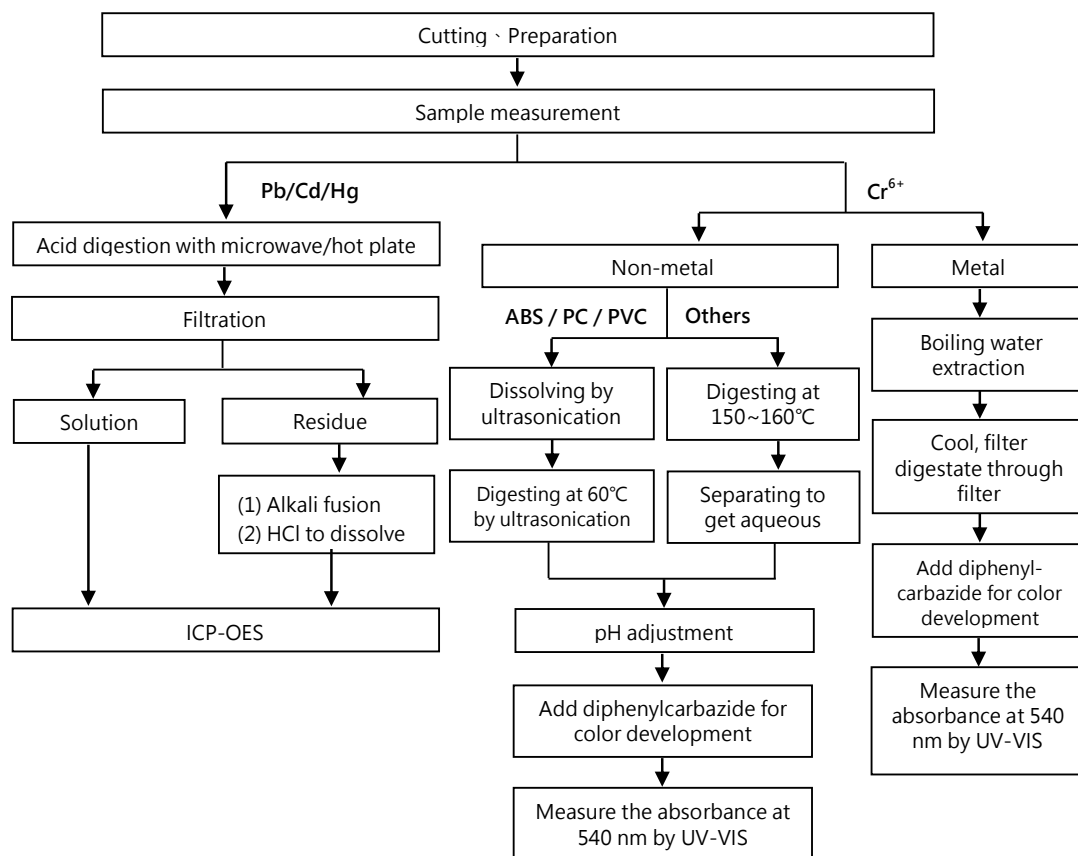
This document is issued by the Company subject to its General Conditions of Service printed overleaf, available on request or accessible at <https://www.sgs.com.tw/terms-of-service> and, for electronic format documents, subject to Terms and Conditions for Electronic Documents at <https://www.sgs.com.tw/terms-of-service>. Attention is drawn to the limitation of liability, indemnification and jurisdiction issues defined therein. Any holder of this document is advised that information contained hereon reflects the Company's findings at the time of its intervention only and within the limits of client's instruction, if any. The Company's sole responsibility is to its Client and this document does not exonerate parties to a transaction from exercising all their rights and obligations under the transaction documents. This document cannot be reproduced, except in full, without prior written approval of the Company. Any unauthorized alteration, forgery or falsification of the content or appearance of this document is unlawful and offenders may be prosecuted to the fullest extent of the law. Unless otherwise stated the results shown in this test report refer only to the sample(s) tested.

SHINKO ELECTRIC INDUSTRIES CO., LTD.  
80 OSHIMADA-MACHI, NAGANO-SHI, 381-2287 JAPAN

## Analytical flow chart of Heavy Metal

These samples were dissolved totally by pre-conditioning method according to below flow chart.

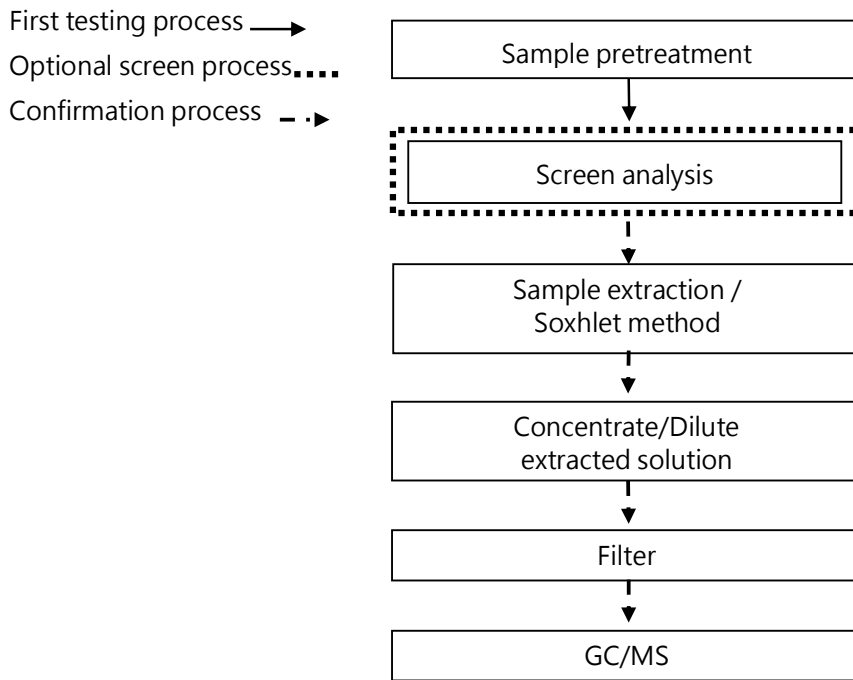
( Cr<sup>6+</sup> test method excluded )



This document is issued by the Company subject to its General Conditions of Service printed overleaf, available on request or accessible at <https://www.sgs.com.tw/terms-of-service> and, for electronic format documents, subject to Terms and Conditions for Electronic Documents at <https://www.sgs.com.tw/terms-of-service>. Attention is drawn to the limitation of liability, indemnification and jurisdiction issues defined therein. Any holder of this document is advised that information contained hereon reflects the Company's findings at the time of its intervention only and within the limits of client's instruction, if any. The Company's sole responsibility is to its Client and this document does not exonerate parties to a transaction from exercising all their rights and obligations under the transaction documents. This document cannot be reproduced, except in full, without prior written approval of the Company. Any unauthorized alteration, forgery or falsification of the content or appearance of this document is unlawful and offenders may be prosecuted to the fullest extent of the law. Unless otherwise stated the results shown in this test report refer only to the sample(s) tested.

SHINKO ELECTRIC INDUSTRIES CO., LTD.  
80 OSHIMADA-MACHI, NAGANO-SHI, 381-2287 JAPAN

### Analytical flow chart – PBBs / PBDEs

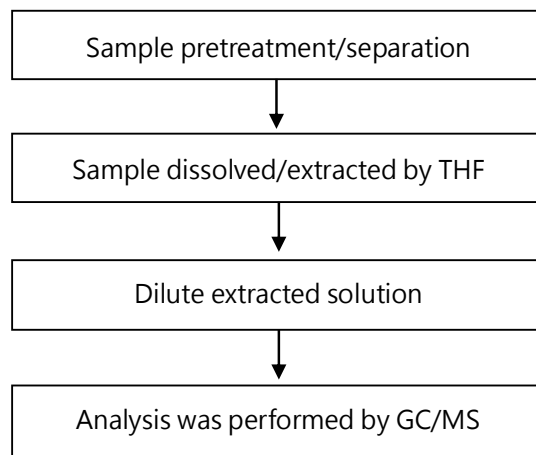


This document is issued by the Company subject to its General Conditions of Service printed overleaf, available on request or accessible at <https://www.sgs.com.tw/terms-of-service> and, for electronic format documents, subject to Terms and Conditions for Electronic Documents at <https://www.sgs.com.tw/terms-of-service>. Attention is drawn to the limitation of liability, indemnification and jurisdiction issues defined therein. Any holder of this document is advised that information contained hereon reflects the Company's findings at the time of its intervention only and within the limits of client's instruction, if any. The Company's sole responsibility is to its Client and this document does not exonerate parties to a transaction from exercising all their rights and obligations under the transaction documents. This document cannot be reproduced, except in full, without prior written approval of the Company. Any unauthorized alteration, forgery or falsification of the content or appearance of this document is unlawful and offenders may be prosecuted to the fullest extent of the law. Unless otherwise stated the results shown in this test report refer only to the sample(s) tested.

SHINKO ELECTRIC INDUSTRIES CO., LTD.  
80 OSHIMADA-MACHI, NAGANO-SHI, 381-2287 JAPAN

## Analytical flow chart - Phthalate

【Test method: IEC 62321-8】

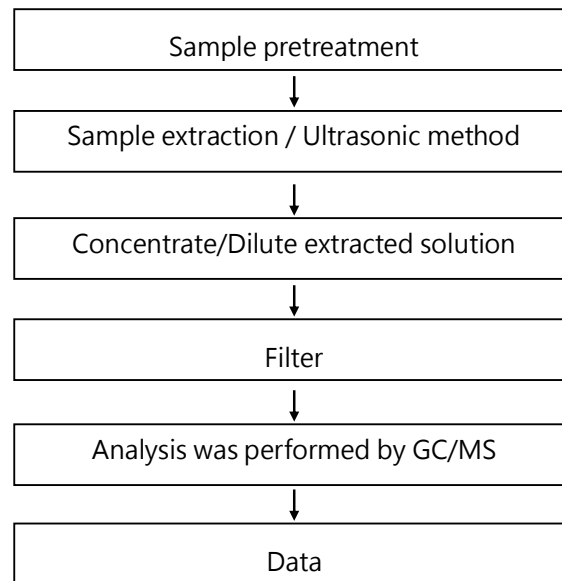


This document is issued by the Company subject to its General Conditions of Service printed overleaf, available on request or accessible at <https://www.sgs.com.tw/terms-of-service> and, for electronic format documents, subject to Terms and Conditions for Electronic Documents at <https://www.sgs.com.tw/terms-of-service>. Attention is drawn to the limitation of liability, indemnification and jurisdiction issues defined therein. Any holder of this document is advised that information contained hereon reflects the Company's findings at the time of its intervention only and within the limits of client's instruction, if any. The Company's sole responsibility is to its Client and this document does not exonerate parties to a transaction from exercising all their rights and obligations under the transaction documents. This document cannot be reproduced, except in full, without prior written approval of the Company. Any unauthorized alteration, forgery or falsification of the content or appearance of this document is unlawful and offenders may be prosecuted to the fullest extent of the law. Unless otherwise stated the results shown in this test report refer only to the sample(s) tested.



SHINKO ELECTRIC INDUSTRIES CO., LTD.  
80 OSHIMADA-MACHI, NAGANO-SHI, 381-2287 JAPAN

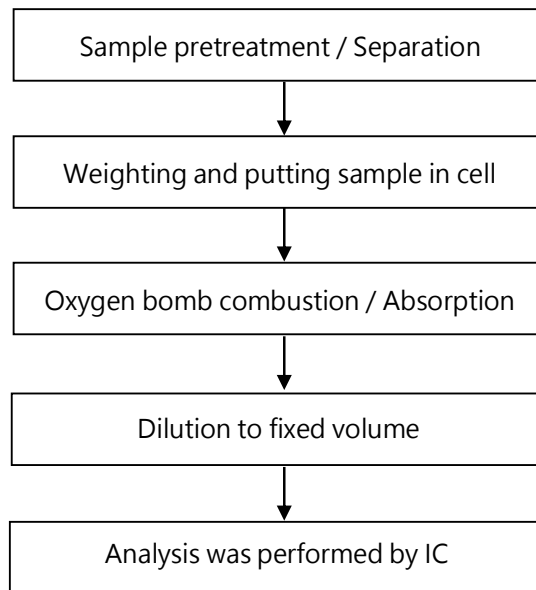
### Analytical flow chart - HBCDD



This document is issued by the Company subject to its General Conditions of Service printed overleaf, available on request or accessible at <https://www.sgs.com.tw/terms-of-service> and, for electronic format documents, subject to Terms and Conditions for Electronic Documents at <https://www.sgs.com.tw/terms-of-service>. Attention is drawn to the limitation of liability, indemnification and jurisdiction issues defined therein. Any holder of this document is advised that information contained hereon reflects the Company's findings at the time of its intervention only and within the limits of client's instruction, if any. The Company's sole responsibility is to its Client and this document does not exonerate parties to a transaction from exercising all their rights and obligations under the transaction documents. This document cannot be reproduced, except in full, without prior written approval of the Company. Any unauthorized alteration, forgery or falsification of the content or appearance of this document is unlawful and offenders may be prosecuted to the fullest extent of the law. Unless otherwise stated the results shown in this test report refer only to the sample(s) tested.

SHINKO ELECTRIC INDUSTRIES CO., LTD.  
80 OSHIMADA-MACHI, NAGANO-SHI, 381-2287 JAPAN

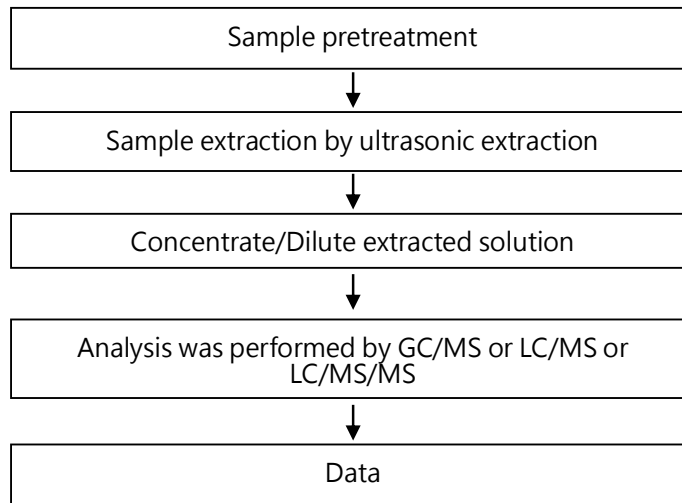
### Analytical flow chart - Halogen



This document is issued by the Company subject to its General Conditions of Service printed overleaf, available on request or accessible at <https://www.sgs.com.tw/terms-of-service> and, for electronic format documents, subject to Terms and Conditions for Electronic Documents at <https://www.sgs.com.tw/terms-of-service>. Attention is drawn to the limitation of liability, indemnification and jurisdiction issues defined therein. Any holder of this document is advised that information contained hereon reflects the Company's findings at the time of its intervention only and within the limits of client's instruction, if any. The Company's sole responsibility is to its Client and this document does not exonerate parties to a transaction from exercising all their rights and obligations under the transaction documents. This document cannot be reproduced, except in full, without prior written approval of the Company. Any unauthorized alteration, forgery or falsification of the content or appearance of this document is unlawful and offenders may be prosecuted to the fullest extent of the law. Unless otherwise stated the results shown in this test report refer only to the sample(s) tested.

SHINKO ELECTRIC INDUSTRIES CO., LTD.  
80 OSHIMADA-MACHI, NAGANO-SHI, 381-2287 JAPAN

### Analytical flow chart – PFAS (including PFOA/PFOS/its related compound, etc.)

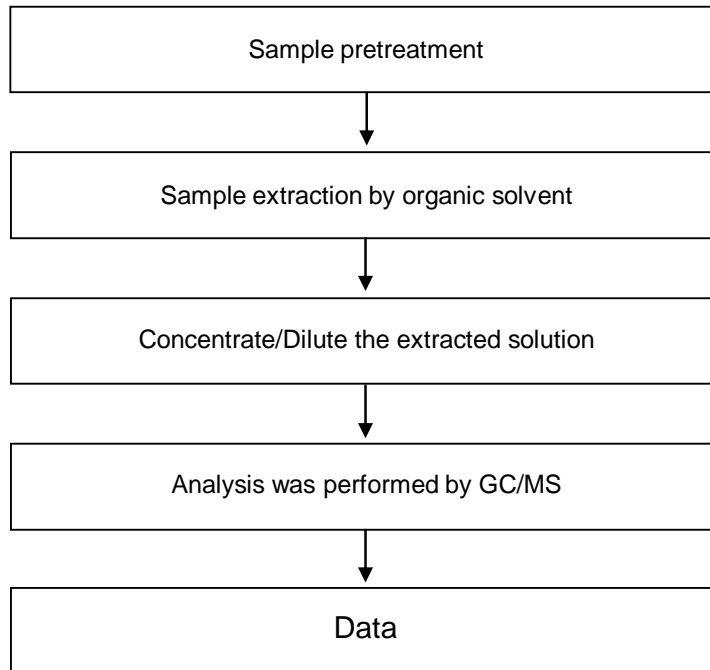


This document is issued by the Company subject to its General Conditions of Service printed overleaf, available on request or accessible at <https://www.sgs.com.tw/terms-of-service> and, for electronic format documents, subject to Terms and Conditions for Electronic Documents at <https://www.sgs.com.tw/terms-of-service>. Attention is drawn to the limitation of liability, indemnification and jurisdiction issues defined therein. Any holder of this document is advised that information contained hereon reflects the Company's findings at the time of its intervention only and within the limits of client's instruction, if any. The Company's sole responsibility is to its Client and this document does not exonerate parties to a transaction from exercising all their rights and obligations under the transaction documents. This document cannot be reproduced, except in full, without prior written approval of the Company. Any unauthorized alteration, forgery or falsification of the content or appearance of this document is unlawful and offenders may be prosecuted to the fullest extent of the law. Unless otherwise stated the results shown in this test report refer only to the sample(s) tested.

SHINKO ELECTRIC INDUSTRIES CO., LTD.  
80 OSHIMADA-MACHI, NAGANO-SHI, 381-2287 JAPAN

### Analytical flow chart

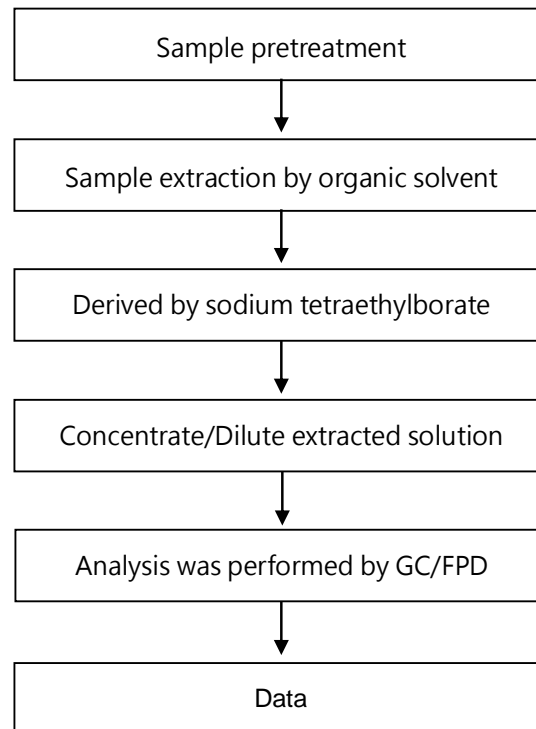
\* Apply to: PCBs, PCNs, PCTs, Mirex, Chlorinated Paraffins, DBBT



This document is issued by the Company subject to its General Conditions of Service printed overleaf, available on request or accessible at <https://www.sgs.com.tw/terms-of-service> and, for electronic format documents, subject to Terms and Conditions for Electronic Documents at <https://www.sgs.com.tw/terms-of-service>. Attention is drawn to the limitation of liability, indemnification and jurisdiction issues defined therein. Any holder of this document is advised that information contained hereon reflects the Company's findings at the time of its intervention only and within the limits of client's instruction, if any. The Company's sole responsibility is to its Client and this document does not exonerate parties to a transaction from exercising all their rights and obligations under the transaction documents. This document cannot be reproduced, except in full, without prior written approval of the Company. Any unauthorized alteration, forgery or falsification of the content or appearance of this document is unlawful and offenders may be prosecuted to the fullest extent of the law. Unless otherwise stated the results shown in this test report refer only to the sample(s) tested.

SHINKO ELECTRIC INDUSTRIES CO., LTD.  
80 OSHIMADA-MACHI, NAGANO-SHI, 381-2287 JAPAN

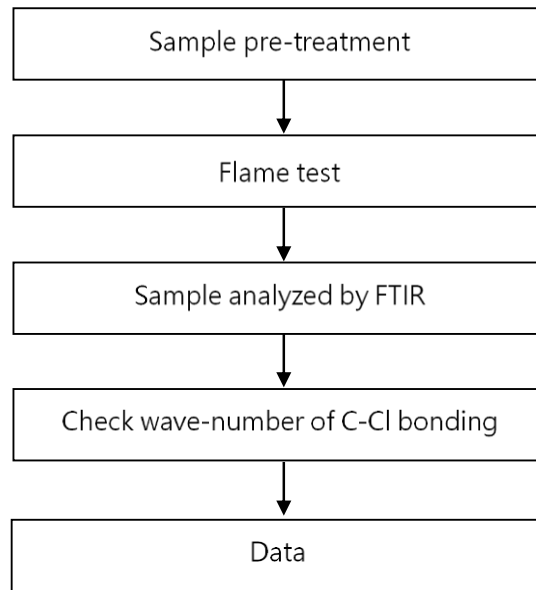
### Analytical flow chart - Organic-Tin



This document is issued by the Company subject to its General Conditions of Service printed overleaf, available on request or accessible at <https://www.sgs.com.tw/terms-of-service> and, for electronic format documents, subject to Terms and Conditions for Electronic Documents at <https://www.sgs.com.tw/terms-of-service>. Attention is drawn to the limitation of liability, indemnification and jurisdiction issues defined therein. Any holder of this document is advised that information contained hereon reflects the Company's findings at the time of its intervention only and within the limits of client's instruction, if any. The Company's sole responsibility is to its Client and this document does not exonerate parties to a transaction from exercising all their rights and obligations under the transaction documents. This document cannot be reproduced, except in full, without prior written approval of the Company. Any unauthorized alteration, forgery or falsification of the content or appearance of this document is unlawful and offenders may be prosecuted to the fullest extent of the law. Unless otherwise stated the results shown in this test report refer only to the sample(s) tested.

SHINKO ELECTRIC INDUSTRIES CO., LTD.  
80 OSHIMADA-MACHI, NAGANO-SHI, 381-2287 JAPAN

### Analysis flow chart - PVC



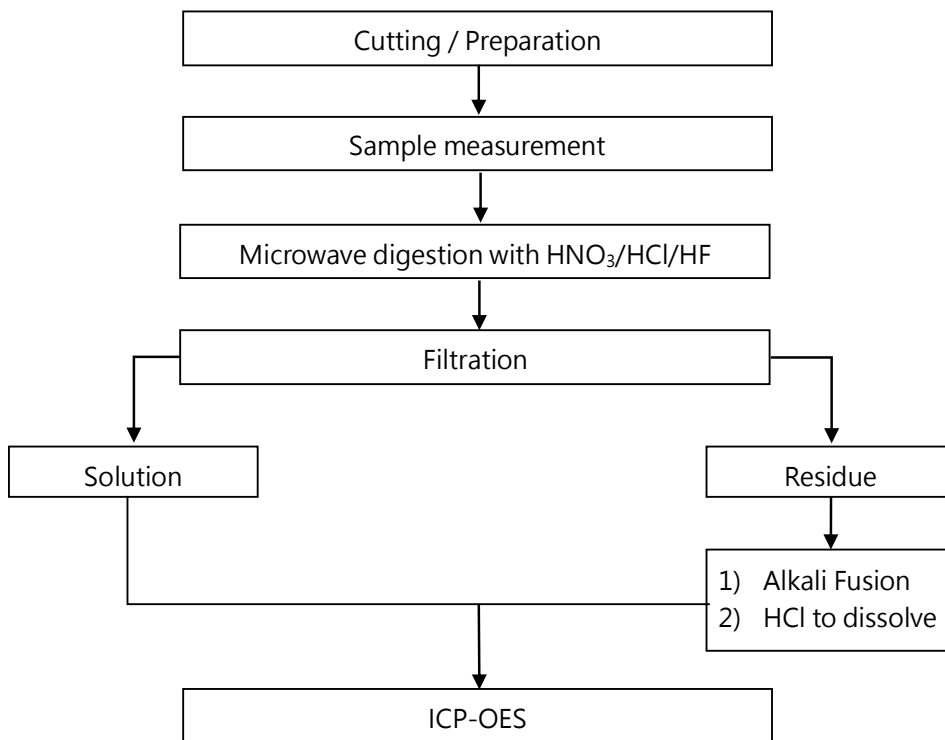
This document is issued by the Company subject to its General Conditions of Service printed overleaf, available on request or accessible at <https://www.sgs.com.tw/terms-of-service> and, for electronic format documents, subject to Terms and Conditions for Electronic Documents at <https://www.sgs.com.tw/terms-of-service>. Attention is drawn to the limitation of liability, indemnification and jurisdiction issues defined therein. Any holder of this document is advised that information contained hereon reflects the Company's findings at the time of its intervention only and within the limits of client's instruction, if any. The Company's sole responsibility is to its Client and this document does not exonerate parties to a transaction from exercising all their rights and obligations under the transaction documents. This document cannot be reproduced, except in full, without prior written approval of the Company. Any unauthorized alteration, forgery or falsification of the content or appearance of this document is unlawful and offenders may be prosecuted to the fullest extent of the law. Unless otherwise stated the results shown in this test report refer only to the sample(s) tested.

SHINKO ELECTRIC INDUSTRIES CO., LTD.  
80 OSHIMADA-MACHI, NAGANO-SHI, 381-2287 JAPAN

### Analytical flow chart of Elements (Heavy Metal included)

These samples were dissolved totally by pre-conditioning method according to below flow chart.

【Reference method : US EPA 3051A 、 US EPA 3052】



\* US EPA 3051A method does not add HF.

This document is issued by the Company subject to its General Conditions of Service printed overleaf, available on request or accessible at <https://www.sgs.com.tw/terms-of-service> and, for electronic format documents, subject to Terms and Conditions for Electronic Documents at <https://www.sgs.com.tw/terms-of-service>. Attention is drawn to the limitation of liability, indemnification and jurisdiction issues defined therein. Any holder of this document is advised that information contained hereon reflects the Company's findings at the time of its intervention only and within the limits of client's instruction, if any. The Company's sole responsibility is to its Client and this document does not exonerate parties to a transaction from exercising all their rights and obligations under the transaction documents. This document cannot be reproduced, except in full, without prior written approval of the Company. Any unauthorized alteration, forgery or falsification of the content or appearance of this document is unlawful and offenders may be prosecuted to the fullest extent of the law. Unless otherwise stated the results shown in this test report refer only to the sample(s) tested.

## Test Report

No.: ETR21B00692

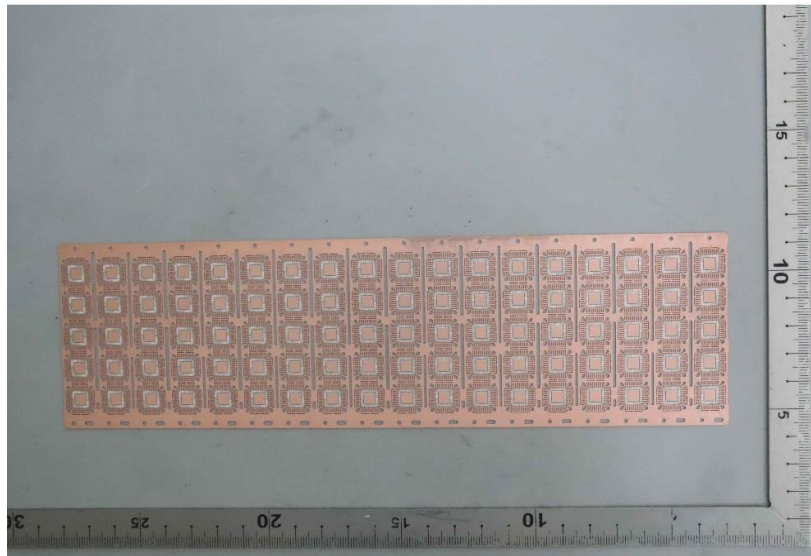
Date: 10-Nov-2021

Page: 16 of 16

SHINKO ELECTRIC INDUSTRIES CO., LTD.  
80 OSHIMADA-MACHI, NAGANO-SHI, 381-2287 JAPAN

\* The tested sample / part is marked by an arrow if it's shown on the photo. \*

### ETR21B00692



\*\* End of Report \*\*

This document is issued by the Company subject to its General Conditions of Service printed overleaf, available on request or accessible at <https://www.sgs.com.tw/terms-of-service> and, for electronic format documents, subject to Terms and Conditions for Electronic Documents at <https://www.sgs.com.tw/terms-of-service>. Attention is drawn to the limitation of liability, indemnification and jurisdiction issues defined therein. Any holder of this document is advised that information contained hereon reflects the Company's findings at the time of its intervention only and within the limits of client's instruction, if any. The Company's sole responsibility is to its Client and this document does not exonerate parties to a transaction from exercising all their rights and obligations under the transaction documents. This document cannot be reproduced, except in full, without prior written approval of the Company. Any unauthorized alteration, forgery or falsification of the content or appearance of this document is unlawful and offenders may be prosecuted to the fullest extent of the law. Unless otherwise stated the results shown in this test report refer only to the sample(s) tested.