

## Test Report

No. CANEC2122370401

Date: 30 Nov 2021

Page 1 of 28

HUA TIAN TECHNOLOGY (XI'AN) CO.,LTD

NO.105,5TH FENGCHENG ROAD,ECON.&TECH.DEVELOPMENT ZONE,XI'AN,CHINA

### This report is to supersede test report CANEC2118278904

The following sample(s) was/were submitted and identified on behalf of the clients as :  
QFN(0808\*0.75-0.40)068

SGS Job No. : CP21-052692 - GZ

Model No. : AXP223 QFN(0808\*0.75-0.40)068

Client Ref. Info. : SEE REMARK

Date of Sample Received : 29 Sep 2021

Testing Period : 29 Sep 2021 - 11 Oct 2021

Test Requested : Selected test(s) as requested by client.

Test Method : Please refer to next page(s).

Test Results : Please refer to next page(s).

Conclusion : Based on the performed tests on submitted sample(s), the results of Lead, Mercury, Cadmium, Hexavalent chromium, Polybrominated biphenyls (PBBs), Polybrominated diphenyl ethers (PBDEs) and Phthalates such as Bis(2-ethylhexyl) phthalate (DEHP) , Butyl benzyl phthalate (BBP), Dibutyl phthalate (DBP) , and Diisobutyl phthalate (DIBP) comply with the limits as set by RoHS Directive (EU) 2015/863 amending Annex II to Directive 2011/65/EU.

Signed for and on behalf of  
SGS-CSTC Standards Technical Services Co., Ltd. Guangzhou Branch

Zmguan

Zm guan  
Approved Signatory

scan to see the report



20E33797



Unless otherwise agreed in writing, this document is issued by the Company subject to its General Conditions of Service printed overleaf, available on request or accessible at <http://www.sgs.com/en/Terms-and-Conditions.aspx> and, for electronic format documents, subject to Terms and Conditions for Electronic Documents at <http://www.sgs.com/en/Terms-and-Conditions/Terms-e-Document.aspx>. Attention is drawn to the limitation of liability, indemnification and jurisdiction issues defined therein. Any holder of this document is advised that information contained hereon reflects the Company's findings at the time of its intervention only and within the limits of Client's instructions, if any. The Company's sole responsibility is to its Client and this document does not exonerate parties to a transaction from exercising all their rights and obligations under the transaction documents. This document cannot be reproduced except in full, without prior written approval of the Company. Any unauthorized alteration, forgery or falsification of the content or appearance of this document is unlawful and offenders may be prosecuted to the fullest extent of the law. Unless otherwise stated the results shown in this test report refer only to the sample(s) tested.

Attention: To check the authenticity of testing / inspection report & certificate, please contact us at telephone: (86-755) 8307 1443, or email: [CN.Doccheck@sgs.com](mailto:CN.Doccheck@sgs.com)

Test Results :

Test Part Description :

Specimen No.	SGS Sample ID	Description
SN1	CAN21-223704.002	"QFN(0808*0.75-0.40)068"

Remarks :

- (1) 1 mg/kg = 0.0001%
- (2) MDL = Method Detection Limit
- (3) ND = Not Detected ( < MDL )
- (4) "-" = Not Regulated

### RoHS Directive (EU) 2015/863 amending Annex II to Directive 2011/65/EU

Test Method : With reference to IEC 62321-4:2013+A1:2017, IEC 62321-5:2013, IEC 62321-7-2:2017 , IEC 62321-6:2015 and IEC 62321-8:2017, analyzed by ICP-OES , UV-Vis and GC-MS .

<u>Test Item(s)</u>	<u>Limit</u>	<u>Unit</u>	<u>MDL</u>	<u>002</u>
Cadmium (Cd)	100	mg/kg	2	ND
Lead (Pb)	1,000	mg/kg	2	ND
Mercury (Hg)	1,000	mg/kg	2	ND
Hexavalent Chromium (CrVI)	1,000	mg/kg	8	ND
Sum of PBBs	1,000	mg/kg	-	ND
Monobromobiphenyl	-	mg/kg	5	ND
Dibromobiphenyl	-	mg/kg	5	ND
Tribromobiphenyl	-	mg/kg	5	ND
Tetrabromobiphenyl	-	mg/kg	5	ND
Pentabromobiphenyl	-	mg/kg	5	ND
Hexabromobiphenyl	-	mg/kg	5	ND
Heptabromobiphenyl	-	mg/kg	5	ND
Octabromobiphenyl	-	mg/kg	5	ND
Nonabromobiphenyl	-	mg/kg	5	ND
Decabromobiphenyl	-	mg/kg	5	ND
Sum of PBDEs	1,000	mg/kg	-	ND
Monobromodiphenyl ether	-	mg/kg	5	ND
Dibromodiphenyl ether	-	mg/kg	5	ND
Tribromodiphenyl ether	-	mg/kg	5	ND
Tetrabromodiphenyl ether	-	mg/kg	5	ND
Pentabromodiphenyl ether	-	mg/kg	5	ND



Unless otherwise agreed in writing, this document is issued by the Company subject to its General Conditions of Service printed overleaf, available on request or accessible at <http://www.sgs.com/en/Terms-and-Conditions.aspx> and, for electronic format documents, subject to Terms and Conditions for Electronic Documents at <http://www.sgs.com/en/Terms-and-Conditions/Terms-e-Documents.aspx>. Attention is drawn to the limitation of liability, indemnification and jurisdiction issues defined therein. Any holder of this document is advised that information contained hereon reflects the Company's findings at the time of its intervention only and within the limits of Client's instructions, if any. The Company's sole responsibility is to its Client and this document does not exonerate parties to a transaction from exercising all their rights and obligations under the transaction documents. This document cannot be reproduced except in full, without prior written approval of the Company. Any unauthorized alteration, forgery or falsification of the content or appearance of this document is unlawful and offenders may be prosecuted to the fullest extent of the law. Unless otherwise stated the results shown in this test report refer only to the sample(s) tested.

Attention: To check the authenticity of testing / inspection report & certificate, please contact us at telephone: (86-755) 8307 1443, or email: [CN.Doccheck@sgs.com](mailto:CN.Doccheck@sgs.com)

## Test Report

No. CANEC2122370401

Date: 30 Nov 2021

Page 3 of 28

<u>Test Item(s)</u>	<u>Limit</u>	<u>Unit</u>	<u>MDL</u>	<u>002</u>
Hexabromodiphenyl ether	-	mg/kg	5	ND
Heptabromodiphenyl ether	-	mg/kg	5	ND
Octabromodiphenyl ether	-	mg/kg	5	ND
Nonabromodiphenyl ether	-	mg/kg	5	ND
Decabromodiphenyl ether	-	mg/kg	5	ND
Dibutyl phthalate (DBP)	1,000	mg/kg	50	ND
Butyl benzyl phthalate (BBP)	1,000	mg/kg	50	ND
Bis (2-ethylhexyl) phthalate (DEHP)	1,000	mg/kg	50	ND
Diisobutyl Phthalates (DIBP)	1,000	mg/kg	50	ND

### Notes :

- (1) The maximum permissible limit is quoted from RoHS Directive (EU) 2015/863.
- (2) IEC 62321 series is equivalent to EN 62321 series  
[https://www.cenelec.eu/dyn/www/f?p=104:30:1742232870351101:::FSP\\_ORG\\_ID,FSP\\_LANG\\_ID:1258637,25](https://www.cenelec.eu/dyn/www/f?p=104:30:1742232870351101:::FSP_ORG_ID,FSP_LANG_ID:1258637,25)
- (3) The restriction of DEHP, BBP, DBP and DIBP shall apply to medical devices, including in vitro medical devices, and monitoring and control instruments, including industrial monitoring and control instruments, from 22 July 2021.

This report updates Client Ref. Info..



Unless otherwise agreed in writing, this document is issued by the Company subject to its General Conditions of Service printed overleaf, available on request or accessible at <http://www.sgs.com/en/Terms-and-Conditions.aspx> and, for electronic format documents, subject to Terms and Conditions for Electronic Documents at <http://www.sgs.com/en/Terms-and-Conditions/Terms-e-Documents.aspx>. Attention is drawn to the limitation of liability, indemnification and jurisdiction issues defined therein. Any holder of this document is advised that information contained hereon reflects the Company's findings at the time of its intervention only and within the limits of Client's instructions, if any. The Company's sole responsibility is to its Client and this document does not exonerate parties to a transaction from exercising all their rights and obligations under the transaction documents. This document cannot be reproduced except in full, without prior written approval of the Company. Any unauthorized alteration, forgery or falsification of the content or appearance of this document is unlawful and offenders may be prosecuted to the fullest extent of the law. Unless otherwise stated the results shown in this test report refer only to the sample(s) tested.

Attention: To check the authenticity of testing / inspection report & certificate, please contact us at telephone: (86-755) 8307 1443, or email: [CN.Doccheck@sgs.com](mailto:CN.Doccheck@sgs.com)

Remark:

AAQFN(1212*0.75-0.50)198	DFN(1.51.5*0.45-0.40)008(B)-SS3	FCQFN16L(0303X0.75-0.45)(C)
DFN(0.60.3*0.30-0.35)002	DFN(1.51.5*0.50-0.40)008(A)	FCQFN16L(2.52.5*0.75-0.45)(B)
DFN(0.60.3*0.30-0.35)002-SS2	DFN(1.51.5*0.50-0.40)008(B)	QFN(0202*0.40-0.40)014(D)
DFN(0.60.3*0.30-0.40)002(A)	DFN(1.51.5*0.55-0.40)008(A)	QFN(0202*0.50-0.40)012(B)
DFN(0.620.32*0.30-0.35)002	DFN(1.51.5*0.55-0.50)006(A)	QFN(0202*0.50-0.40)012-SS3
DFN(0.620.32*0.30-0.35)002(B)-SS2	DFN(1.51.5*0.55-0.50)006(B)	QFN(0202*0.50-0.40)014(A)
DFN(0.620.32*0.30-0.35)002-SS2	DFN(1.51.5*0.85-0.40)008(B)	QFN(0202*0.50-0.40)014(C)
DFN(0.80.4*0.30-0.45)004(A)	DFN(1.51.5*0.85-0.50)006(A)	QFN(0202*0.50-0.40)014(D)
DFN(0.80.8*0.40-0.50)004(A)	DFN(1.52.0*0.55-0.50)006(A)	QFN(0202*0.55-0.40)014(A)
DFN(0.91.2*0.40-0.55)004(A)	DFN(1.52.0*0.55-0.50)006(B)	QFN(0202*0.55-0.40)014(B)
DFN(0101*0.40-0.35)006(A)	DFN(1.52.0*0.55-0.50)006(B)-SS2	QFN(0202*0.55-0.40)014(B)-SS2
DFN(0101*0.40-0.65)004(A)	DFN(1.52.0*0.85-0.50)006(A)	QFN(0202*0.55-0.40)016(A)
DFN(0101*0.40-0.65)004(B)	DFN(1.571.90*0.45-0.50)006(A)	QFN(0202*0.55-0.50)012(B)
DFN(0201*0.50-0.80)005(A)	DFN(1.571.90*0.55-0.50)006(A)	QFN(0202*0.55-0.50)012(C)
DFN(0201*0.50-0.80)005(B)	DFN(1.60.8*0.50-0.88)002(A)	QFN(0202*0.55-0.50)012(D)
DFN(0202*0.50-0.50)004	DFN(1.601.90*0.55-0.35)008(A)	QFN(0202*0.55-0.50)012(E)
DFN(0202*0.50-0.50)008(C)	DFN(1.61.0*0.50-0.50)006	QFN(0202*0.85-0.50)009(A)
DFN(0202*0.50-0.50)008(D)	DFN(1.61.0*0.50-0.50)006(B)	QFN(0203*0.85-0.40)016(A)
DFN(0202*0.50-0.65)006	DFN(1.61.0*0.50-0.50)006(B)-SS2	QFN(0302*0.75-0.50)012(A)
DFN(0202*0.50-0.65)006(B)-SS2	DFN(1.61.0*0.50-0.50)006-SS2	QFN(0303*0.40-0.40)020(A)
DFN(0202*0.50-0.65)006(C)	DFN(1.61.0*0.50-1.05)002(A)	QFN(0303*0.40-0.40)024(B)
DFN(0202*0.50-0.65)006(D)	DFN(1.61.0*0.50-1.10)002	QFN(0303*0.50-0.50)016(A)



DFN(0202*0.50-0.65)006(D)-SS2	DFN(1.61.0*0.50-1.10)002(B)	QFN(0303*0.50-0.50)016(A)-SS3
DFN(0202*0.50-1.20)002	DFN(1.61.0*0.50-1.10)002-SS2	QFN(0303*0.55-0.35)024(A)
DFN(0202*0.50-1.20)002-SS2	DFN(1.61.0*0.50-1.10)002-SS3	QFN(0303*0.55-0.35)024(A)-SD2
DFN(0202*0.50-1.30)004	DFN(1.61.0*0.50-1.10)002-SS4	QFN(0303*0.55-0.40)020(A)
DFN(0202*0.55-0.50)008(D)	DFN(1.61.0*0.55-0.50)006	QFN(0303*0.55-0.40)020(B)
DFN(0202*0.55-0.50)008(E)	DFN(1.61.0*0.55-0.50)006-SS2	QFN(0303*0.55-0.40)020(B)-SS2
DFN(0202*0.55-0.65)006(B)-SS2	DFN(1.61.0*0.55-1.05)002(A)	QFN(0303*0.55-0.45)014(A)
DFN(0202*0.55-0.65)006(C)	DFN(1.61.0*0.55-1.10)002	QFN(0303*0.55-0.50)016(A)
DFN(0202*0.55-0.65)006(D)	DFN(1.61.2*0.40-0.40)008(A)	QFN(0303*0.55-0.50)016(A)-SS2
DFN(0202*0.55-0.65)006(D)-SS2	DFN(1.61.6*0.55-0.40)006(A)	QFN(0303*0.55-0.50)016(C)
DFN(0202*0.55-0.65)006(E)	DFN(1.61.6*0.75-0.50)006	QFN(0303*0.55-0.50)016(C)-SS2
DFN(0202*0.55-1.30)003(A)	DFN(1.61.6*0.75-0.50)006(B)-SS2	QFN(0303*0.55-0.50)016(C)-SS3
DFN(0202*0.55-1.30)003(A)-SD2	DFN(1.61.6*0.75-0.50)006(C)	QFN(0303*0.55-0.50)016(E)
DFN(0202*0.55-1.30)003(A)-SS2	DFN(1.61.6*0.75-0.50)006(D)	QFN(0303*0.55-0.50)016(E)-SS2
DFN(0202*0.55-1.35)002(A)	DFN(1.61.6*0.75-0.50)006-SS3	QFN(0303*0.75-0.40)020
DFN(0202*0.75-0.40)010(A)	DFN(1.61.6*0.75-1.00)002(A)	QFN(0303*0.75-0.40)020(C)
DFN(0202*0.75-0.40)010(A)-SD2	DFN(1010*0.90-2.0)006(A)-SD2	QFN(0303*0.75-0.40)020(C)-SD2
DFN(0202*0.75-0.40)010(B)	DFN(1010*0.90-2.0)006(A)-SIP	QFN(0303*0.75-0.40)020-SD2
DFN(0202*0.75-0.40)010(B)-HBP	DFN(2.001.25*0.50-1.30)002(A)	QFN(0303*0.75-0.40)020-SS2
DFN(0202*0.75-0.50)008(B)	DFN(2.11.8*0.55-0.40)010(A)	QFN(0303*0.75-0.40)020-SS3
DFN(0202*0.75-0.50)008(B)-SD2	DFN(2.41.5*0.50-0.40)012	QFN(0303*0.75-0.40)024(A)
DFN(0202*0.75-0.50)008(D)-SD2	DFN(2.51.0*0.50-0.50)010	QFN(0303*0.75-0.40)024(A)-SS2
DFN(0202*0.75-0.50)008(F)	DFN(2.51.0*0.50-0.50)010(B)	QFN(0303*0.75-0.50)012



DFN(0202*0.75-0.50)008(H)	DFN(2.51.0*0.50-0.50)010(B)-SS2	QFN(0303*0.75-0.50)016
DFN(0202*0.75-0.50)008(H)-SD2	DFN(2.51.0*0.50-0.50)010(B)-SS4	QFN(0303*0.75-0.50)016(B)
DFN(0202*0.75-0.65)006	DFN(2.51.0*0.50-0.50)010(B)-SS6	QFN(0303*0.75-0.50)016(E)
DFN(0202*0.75-0.65)006(D)	DFN(2.51.0*0.50-0.50)010(C)	QFN(0303*0.75-0.50)016(E)-SD2
DFN(0202*0.75-0.65)006(D)-SD2	DFN(2.51.0*0.50-0.50)010(C)-SS2	QFN(0303*0.75-0.50)016(E)-SS2
DFN(0202*0.75-0.65)006(D)-SS2	DFN(2.51.0*0.50-0.50)010(D)	QFN(0303*0.75-0.50)016(E)-SS3
DFN(0202*0.75-0.65)006(E)	DFN(2.51.0*0.50-0.50)010(E)	QFN(0303*0.75-0.50)016(F)
DFN(0202*0.75-0.65)006(E)-SIP	DFN(2.51.0*0.55-0.50)010	QFN(0303*0.75-0.50)016-SD2
DFN(0202*0.75-0.65)006(E)-SS2	DFN(2.51.0*0.55-0.50)010(B)	QFN(0303*0.75-0.50)016-SS2
DFN(0202*0.75-0.65)006(F)	DFN(2.51.0*0.55-0.50)010(C)	QFN(0303*0.75-0.50)016-SS3
DFN(0202*0.75-0.65)006(G)	DFN(2.52.0*0.75-0.50)010	QFN(0303*0.75-0.50)020(B)
DFN(0202*0.75-0.65)006(H)-SS2	DFN(2.52.0*0.75-0.50)010-SS3	QFN(0303*0.75-0.50)020(B)-SD2
DFN(0202*0.75-0.65)006-SS2	DFN(2.52.5*0.50-0.50)008	QFN(0303*0.75-0.65)008(A)
DFN(0202*0.75-0.675)005(A)-SD2	DFN(2.52.5*0.75-0.50)010(A)	QFN(0303*0.85-0.35)024(A)
DFN(0202*0.85-0.40)010(A)	DFN(2.52.5*0.75-0.50)010(A)-SS2	QFN(0303*0.85-0.40)020
DFN(0202*0.85-0.50)008(B)	DFN(2.53.5*0.75-0.65)006-SD2	QFN(0303*0.85-0.40)020(A)
DFN(0202*0.85-0.50)008(D)	DFN(2.54.0*0.75-0.40)012(A)	QFN(0303*0.85-0.40)020(B)-SD2
DFN(0202*0.85-0.50)008(G)	DFN(2.54.0*0.75-0.40)012(A)-SD2	QFN(0303*0.85-0.40)020(C)
DFN(0202*0.85-0.50)008(H)	DFN(2.54.0*0.75-0.40)012(B)	QFN(0303*0.85-0.40)024(A)
DFN(0202*0.85-0.50)008(H)-SS2	DFN(2.54.0*0.75-0.40)012(B)-SD2	QFN(0303*0.85-0.40)024(A)-SD2
DFN(0202*0.90-0.50)008(B)	DFN(2.601.35*0.50-0.50)010(A)-SS3	QFN(0303*0.85-0.50)010
DFN(0202*1.00-0.50)008(I)	DFN(2.70.8*0.50-0.60)009(A)-SS2	QFN(0303*0.85-0.50)016
DFN(0202X0.55-1.30)003(A)	DFN(3.01.5*0.50-0.45)012	QFN(0303*0.85-0.50)016(A)



DFN(0202X0.85-1.30)003(A)	DFN(3.22.5*0.85-2.05)004(A)	QFN(0303*0.85-0.50)016(E)
DFN(0203*0.40-0.50)008(G)	DFN(3.31.0*0.50-0.40)010	QFN(0303*0.85-0.50)016(F)
DFN(0203*0.45-0.50)008(B)	DFN(3.31.0*0.50-0.40)010-SS2	QFN(0303*0.85-0.50)016(F)-SS2
DFN(0203*0.45-0.50)008(H)	DFN(3.31.0*0.50-0.40)010-SS3	QFN(0303*0.90-0.40)020(C)-SD3
DFN(0203*0.50-0.50)008	DFN(3.31.2*0.75-0.50)004(A)-SS3	QFN(0303*0.90-0.50)016
DFN(0203*0.50-0.50)008(B)	DFN(3.81.0*0.50-0.80)009	QFN(0303*0.90-0.50)016(E)
DFN(0203*0.50-0.50)008(C)	DFN(3.81.0*0.50-0.80)009-SS2	QFN(0304*0.85-0.40)024
DFN(0203*0.50-0.50)008(H)	DFN(3.81.0*0.50-0.80)009-SS3	QFN(0305*0.75-0.50)024(A)
DFN(0203*0.50-0.50)008-SS2	DFN(3.81.0*0.50-0.80)009-SS4	QFN(0305*0.75-0.50)024(A)-SS3
DFN(0203*0.55-0.50)008	DFN(4.04.5*0.85-1.30)006(A)	QFN(0305*0.75-0.50)024(B)-SS3
DFN(0203*0.55-0.50)008(B)	DFN(4.04.5*0.85-1.30)006(B)	QFN(0305*0.75-0.50)024(B)-SS4
DFN(0203*0.55-0.50)008(H)	DFN(4.04.5*0.85-1.30)006(B)-SS2	QFN(0305*0.85-0.50)024(A)-SS3
DFN(0203*0.75-0.50)006	DFN(4.04.5*1.0-1.30)006(A)	QFN(0305*0.85-0.50)024(A)-SS4
DFN(0203*0.75-0.50)006-SD2	DFN(4.12.0*0.50-0.80)010	QFN(0305*0.85-0.50)024(A)-SS5
DFN(0203*0.75-0.50)006-SS2	DFN(4.12.0*0.50-0.80)010-SS2	QFN(0404*0.30-0.40)032(A)
DFN(0203*0.75-0.50)006-SS3	DFN(4.12.0*0.50-0.80)010-SS3	QFN(0404*0.30-0.40)032(D)
DFN(0203*0.75-0.50)008	DFN(4.12.0*0.50-0.80)010-SS4	QFN(0404*0.40-0.40)032(A)
DFN(0203*0.75-0.50)008(B)	DFN(4.12.0*0.55-0.80)010	QFN(0404*0.45-0.50)020(C)
DFN(0203*0.75-0.50)008(B)-SS2	DFN(4.24.0*0.55-1.00)008	QFN(0404*0.50-0.50)024
DFN(0203*0.75-0.50)008(C)	DFN(4.24.0*0.85-1.00)008	QFN(0404*0.50-0.65)016(A)
DFN(0203*0.75-0.50)008(D)	DFN(4.53.5*0.75-0.50)020	QFN(0404*0.55-0.35)036(A)
DFN(0203*0.75-0.50)008(E)-SS3	DFN(4.53.5*0.75-0.50)020-SD2	QFN(0404*0.55-0.35)036(A)-SD2
DFN(0203*0.75-0.50)008-SD2	DFN(4.53.5*0.75-0.50)020-SS2	QFN(0404*0.55-0.40)032(A)



DFN(0203*0.75-0.50)008-SS2	DFN(4.53.5*0.75-0.50)020-SS5	QFN(0404*0.55-0.40)032(A)-SD2
DFN(0203*0.75-0.50)008-SS3	DFN(4.53.5*0.85-0.50)020	QFN(0404*0.55-0.40)032(A)-SS2
DFN(0203*0.75-0.65)006	DFN(4.53.5*0.90-0.50)020	QFN(0404*0.55-0.40)032(H)
DFN(0203*0.75-0.65)006-SD2	DFN(5.51.5*0.50-0.50)014-SS2	QFN(0404*0.55-0.50)024
DFN(0203*0.75-0.65)006-SS2	DFN(5.51.5*0.50-0.50)014-SS3	QFN(0404*0.55-0.50)024-SS2
DFN(0203*0.75-0.65)006-SS3	DFN(5.51.5*0.50-0.50)018	QFN(0404*0.55-0.50)028(A)
DFN(0203*0.85-0.50)008(F)	DFN(5.51.5*0.50-0.50)018(B)-SS8	QFN(0404*0.75-0.40)028
DFN(0204*0.75-0.50)006(A)-SS3	DFN(5.51.5*0.50-0.50)018(C)-SS8	QFN(0404*0.75-0.40)028(B)
DFN(0302*0.50-0.95)006-SS5	DFN(5.51.5*0.50-0.50)018-SS2	QFN(0404*0.75-0.40)028(B)-SD2
DFN(0302*0.50-0.95)006-SS7	DFN(5.51.5*0.50-0.50)018-SS3	QFN(0404*0.75-0.40)028(B)-SS2
DFN(0302*0.55-0.60)010(A)	DFN(5.51.5*0.50-0.50)018-SS4	QFN(0404*0.75-0.40)028(C)
DFN(0302*0.55-0.60)010(A)-SS3	DFN(5.51.5*0.50-0.50)018-SS8	QFN(0404*0.75-0.40)028(D)
DFN(0302*0.55-0.60)010(A)-SS4	DFN(6.57.0*0.85-1.60)006(A)	QFN(0404*0.75-0.40)028-SD2
DFN(0302*0.75-0.40)014	DFN(6.57.0*0.85-1.60)006(A)-SS4	QFN(0404*0.75-0.40)028-SS2
DFN(0302*0.75-0.40)014(B)	DFN(6.57.0*0.85-1.60)006(A)-SS5	QFN(0404*0.75-0.40)032
DFN(0302*0.75-0.40)014(C)	DFN(6.57.0*0.85-1.60)006(A)-SS6	QFN(0404*0.75-0.40)032(B)
DFN(0302*0.75-0.40)014-SS2	DFN16L(0505*0.75-0.50)-SD2	QFN(0404*0.75-0.40)032(B)-SD2
DFN(0302*0.75-0.50)012(A)	DFN8L(0203*0.75-0.50)(E)-SS3	QFN(0404*0.75-0.40)032(B)-SS2
DFN(0302*0.75-0.65)008	FCDFN(0201*0.55-0.80)005(A)	QFN(0404*0.75-0.40)032(C)
DFN(0302*0.75-0.65)008(C)-SS2	FCDFN(0201*0.55-0.80)005(B)	QFN(0404*0.75-0.40)032(F)
DFN(0302*0.75-0.65)008(D)-SS2	FCDFN(0202*0.55-0.50)008(B)	QFN(0404*0.75-0.40)032(G)
DFN(0302*0.75-0.65)008-SS2	FCDFN(0202*0.55-0.50)008(C)	QFN(0404*0.75-0.40)032-SD2
DFN(0302*0.85-0.95)006	FCDFN(0202*0.75-0.50)008(A)	QFN(0404*0.75-0.40)032-SS2





DFN(0303*0.50-0.45)012	FCDFN(0202*0.75-0.65)004(B)	QFN(0404*0.75-0.40)036(A)
DFN(0303*0.50-0.50)010(C)	FCDFN(0202*0.75-0.65)004(C)	QFN(0404*0.75-0.45)028
DFN(0303*0.55-0.50)010(E)	FCDFN(0202*0.75-0.65)006	QFN(0404*0.75-0.50)016
DFN(0303*0.75-0.45)012	FCDFN(0202*0.85-0.65)006	QFN(0404*0.75-0.50)016-SS2
DFN(0303*0.75-0.45)012(C)-SIP	FCDFN(0302*0.40-0.60)010(A)-SS2	QFN(0404*0.75-0.50)020
DFN(0303*0.75-0.45)012(C)-SS2	FCDFN(0303*0.75-0.50)010	QFN(0404*0.75-0.50)020(B)
DFN(0303*0.75-0.45)012(C)-SS3	FCDFN(0303*0.75-0.65)008	QFN(0404*0.75-0.50)020(D)
DFN(0303*0.75-0.45)012(C)-SS4	FCDFN(1.00.6*0.40-0.65)002(A)	QFN(0404*0.75-0.50)020-SD2
DFN(0303*0.75-0.45)012-SIP	FCDFN(1.00.6*0.55-0.65)002(B)	QFN(0404*0.75-0.50)020-SS2
DFN(0303*0.75-0.45)012-SS2	FCDFN(1.10.7*0.50-0.40)006(A)	QFN(0404*0.75-0.50)020-SS3
DFN(0303*0.75-0.50)008(B)	FCDFN(1.30.8*0.40-0.45)006(A)	QFN(0404*0.75-0.50)020-SS4
DFN(0303*0.75-0.50)010	FCDFN(1.61.6*0.55-0.50)006(A)	QFN(0404*0.75-0.50)023(A)-SS3
DFN(0303*0.75-0.50)010(A)	FCDFN(2.01.5*0.85-0.50)008(A)	QFN(0404*0.75-0.50)024
DFN(0303*0.75-0.50)010(B)	FCDFN(2.52.0*0.85-0.40)010(A)	QFN(0404*0.75-0.50)024(B)
DFN(0303*0.75-0.50)010(D)	FCQFN(0202*0.55-0.45)012(A)	QFN(0404*0.75-0.50)024(C)
DFN(0303*0.75-0.50)010-SD2	FCQFN(0202*0.75-0.40)016	QFN(0404*0.75-0.50)024(D)
DFN(0303*0.75-0.50)010-SS2	FCQFN(0202*0.85-0.40)012(A)	QFN(0404*0.75-0.50)024(D)-SS2
DFN(0303*0.75-0.50)010-SS3	FCQFN(0202*0.85-0.50)011	QFN(0404*0.75-0.50)024(D)-SS4
DFN(0303*0.75-0.50)012(A)	FCQFN(0202*0.85-0.50)012	QFN(0404*0.75-0.50)024(E)
DFN(0303*0.75-0.65)008	FCQFN(0202*0.85-0.50)012(B)	QFN(0404*0.75-0.50)024(F)
DFN(0303*0.75-0.65)008(C)	FCQFN(0203*0.75-0.50)012(B)	QFN(0404*0.75-0.50)024(G)
DFN(0303*0.75-0.65)008(C)-SS2	FCQFN(0203*0.85-0.40)015(A)	QFN(0404*0.75-0.50)024(H)
DFN(0303*0.75-0.65)008(D)	FCQFN(0203*0.85-0.40)016(A)	QFN(0404*0.75-0.50)024(H)-SD2



DFN(0303*0.75-0.65)008(E)	FCQFN(0203*0.85-0.40)018(A)	QFN(0404*0.75-0.50)024(H)-SS4
DFN(0303*0.75-0.65)008(E)	FCQFN(0203*0.85-0.45)012(A)	QFN(0404*0.75-0.50)024(I)
DFN(0303*0.75-0.65)008(E)-SS2	FCQFN(0203*0.85-0.50)012	QFN(0404*0.75-0.50)024(K)
DFN(0303*0.75-0.65)008(F)-SS2	FCQFN(0203*0.85-0.50)012(B)	QFN(0404*0.75-0.50)024(L)
DFN(0303*0.75-0.65)008(G)	FCQFN(0203*0.85-0.50)012(C)	QFN(0404*0.75-0.50)024-SD2
DFN(0303*0.75-0.65)008(H)	FCQFN(0203*0.85-0.50)012(D)	QFN(0404*0.75-0.50)024-SIP
DFN(0303*0.75-0.65)008-SD2	FCQFN(0203*0.85-0.50)013	QFN(0404*0.75-0.50)024-SS2
DFN(0303*0.75-0.65)008-SS2	FCQFN(0203*0.85-0.50)014	QFN(0404*0.75-0.50)025(A)-SS5
DFN(0303*0.75-0.65)008-SS3	FCQFN(0203*0.85-0.50)014(B)	QFN(0404*0.75-0.50)027(A)-SS5
DFN(0303*0.75-2.415)002	FCQFN(0203*0.85-0.50)014(C)	QFN(0404*0.75-0.65)016
DFN(0303*0.85-0.45)012	FCQFN(0303*0.55-0.40)020(A)	QFN(0404*0.75-0.65)016(B)
DFN(0303*0.85-0.50)010(D)	FCQFN(0303*0.75-0.40)018(A)	QFN(0404*0.75-0.65)016(B)-SD2
DFN(0303*0.85-0.50)010-SS2	FCQFN(0303*0.75-0.40)019(B)	QFN(0404*0.75-0.65)016(B)-SS2
DFN(0303*0.90-0.50)010	FCQFN(0303*0.75-0.40)021(B)	QFN(0404*0.75-0.65)016(C)
DFN(0303*0.90-0.50)010(A)	FCQFN(0303*0.75-0.40)022(A)	QFN(0404*0.75-0.65)016(E)
DFN(0303*0.90-0.65)008(H)	FCQFN(0303*0.75-0.45)012(A)	QFN(0404*0.75-0.65)016-SS3
DFN(0303*1.00-1.00)006(A)	FCQFN(0303*0.75-0.45)020	QFN(0404*0.85-0.35)036(A)-SD2
DFN(0303*1.00-1.00)006(A)-SS2	FCQFN(0303*0.75-0.45)020(B)	QFN(0404*0.85-0.35)036(A)-SD3
DFN(0304*0.75-0.65)008	FCQFN(0303*0.75-0.45)020(C)	QFN(0404*0.85-0.40)028(B)
DFN(0304*0.75-0.65)008(B)	FCQFN(0303*0.75-0.45)020(D)	QFN(0404*0.85-0.40)028(C)
DFN(0402*0.75-0.50)016	FCQFN(0303*0.75-0.45)020(E)	QFN(0404*0.85-0.40)032
DFN(0403*0.45-0.80)008	FCQFN(0303*0.75-0.50)015(A)	QFN(0404*0.85-0.40)032(A)-SD3
DFN(0403*0.55-0.80)008	FCQFN(0303*0.75-0.50)016(H)	QFN(0404*0.85-0.40)032(B)



DFN(0403*0.55-0.80)008(B)	FCQFN(0303*0.75-0.50)016(I)	QFN(0404*0.85-0.40)032(B)-SD2
DFN(0403*0.75-0.50)012(A)	FCQFN(0303*0.75-0.50)018(A)	QFN(0404*0.85-0.40)032(B)-SIP
DFN(0403*0.75-0.50)014	FCQFN(0303*0.85-0.40)016	QFN(0404*0.85-0.40)032(B)-SS2
DFN(0403*0.75-0.50)014(B)	FCQFN(0303*0.85-0.40)016(B)	QFN(0404*0.85-0.40)032(C)
DFN(0403*0.75-0.50)014-SS2	FCQFN(0303*0.85-0.40)016(C)	QFN(0404*0.85-0.40)032(C)-SD2
DFN(0403*0.85-0.50)014(B)	FCQFN(0303*0.85-0.40)019(A)	QFN(0404*0.85-0.40)032(F)
DFN(0403*0.85-0.50)014-SS2	FCQFN(0303*0.85-0.40)019(C)	QFN(0404*0.85-0.40)032(F)-SD2
DFN(0404*0.45-0.80)008(A)	FCQFN(0303*0.85-0.40)021(A)	QFN(0404*0.85-0.40)032-SD2
DFN(0404*0.50-0.80)008(A)	FCQFN(0303*0.85-0.45)016(A)	QFN(0404*0.85-0.40)032-SD3
DFN(0404*0.50-0.80)008(A)-SS2	FCQFN(0303*0.85-0.45)016(D)	QFN(0404*0.85-0.50)020(D)
DFN(0404*0.55-0.80)008(A)	FCQFN(0303*0.85-0.50)014(A)	QFN(0404*0.85-0.50)020-SS3
DFN(0404*0.75-0.40)020(A)	FCQFN(0303*0.85-0.50)016	QFN(0404*0.85-0.50)024
DFN(0404*0.75-0.65)008(B)	FCQFN(0303*0.85-0.50)016(B)	QFN(0404*0.85-0.50)024(C)
DFN(0404*0.75-0.65)008-SS2	FCQFN(0303*0.85-0.50)016(C)	QFN(0404*0.85-0.50)024(D)
DFN(0404*0.75-0.80)010(A)	FCQFN(0303*0.85-0.50)016(D)	QFN(0404*0.85-0.50)024(E)
DFN(0404*0.75-1.00)008(B)-SS4	FCQFN(0303*0.85-0.50)016(F)	QFN(0404*0.85-0.50)024(F)
DFN(0404*0.75-1.00)008(B)-SS6	FCQFN(0303*0.85-0.50)017(A)	QFN(0404*0.85-0.50)024(H)
DFN(0404*0.85-0.80)008(A)	FCQFN(0304*0.75-0.40)015(A)	QFN(0404*0.85-0.50)024(H)-SS2
DFN(0404*0.85-0.80)008(B)	FCQFN(0304*0.75-0.40)021(C)	QFN(0404*0.85-0.50)024-SD2
DFN(0404*0.85-0.80)010(A)	FCQFN(0304*0.75-0.40)021(D)	QFN(0404*0.85-0.50)024-SD3
DFN(0404*0.85-0.95)006(A)	FCQFN(0304*0.75-0.45)013(A)	QFN(0404*0.85-0.50)024-SS2
DFN(0405*0.75-1.00)008(A)	FCQFN(0304*0.75-0.45)013(B)	QFN(0404*0.85-0.65)016
DFN(043.5*0.75-0.50)016	FCQFN(0304*0.75-0.45)016(A)	QFN(0404*0.85-0.65)016(B)



DFN(043.5*0.75-0.50)016-SS2	FCQFN(0304*0.75-0.50)019(B)	QFN(0404*0.90-0.40)032
DFN(0504*0.75-0.50)014	FCQFN(0304*0.85-0.40)019(A)	QFN(0404*0.90-0.40)032(B)
DFN(0504*0.75-0.50)016(A)	FCQFN(0304*0.85-0.40)021(A)	QFN(0404*0.90-0.40)032(B)-SD2
DFN(0504*0.75-0.75)014(A)	FCQFN(0304*0.85-0.40)026(A)	QFN(0404*0.90-0.50)016-SS2
DFN(0504*0.75-0.80)012-SS2	FCQFN(0304*0.85-0.45)017(A)	QFN(0404*0.90-0.50)020
DFN(0504*0.75-0.80)012-SS3	FCQFN(0304*0.85-0.50)013(A)	QFN(0404*0.90-0.50)020-SS2
DFN(0504*0.85-0.50)016(A)-SD2	FCQFN(0304*0.85-0.50)014(A)	QFN(0404*0.90-0.50)024
DFN(0504*0.85-1.27)008(A)-SD2	FCQFN(0304*0.85-0.50)017	QFN(0404*0.90-0.50)024(D)
DFN(0505*0.75-0.50)016	FCQFN(0304*0.85-0.50)018(A)	QFN(0404*0.90-0.50)024(D)-SS2
DFN(0505*0.75-0.50)016-SS4	FCQFN(0304*0.85-0.50)019(A)	QFN(0404*0.90-0.50)024(K)
DFN(0505*0.75-1.27)008	FCQFN(0304*0.85-0.50)022	QFN(0404*0.90-0.50)024-SD2
DFN(0506*0.75-1.27)008(B)	FCQFN(0304*0.85-0.50)022(A)	QFN(0404*0.90-0.65)016(D)
DFN(0506*0.75-1.27)008(B)-SS3	FCQFN(0305*0.75-0.40)021(A)	QFN(0405*0.75-0.30)048(A)
DFN(0506*0.75-1.27)008(C)	FCQFN(0404*0.55-0.40)032(C)	QFN(0405*0.75-0.50)024(A)
DFN(0506*0.75-1.27)008(D)	FCQFN(0404*0.55-0.40)032(D)	QFN(0405*0.75-0.50)024(B)
DFN(0506*0.75-1.27)008(E)	FCQFN(0404*0.75-0.40)021(A)	QFN(0405*0.75-0.50)028
DFN(0506*0.75-1.27)008(E)-SD2	FCQFN(0404*0.75-0.40)021(B)	QFN(0405*0.90-0.50)024(B)
DFN(0506*0.75-1.27)008(F)	FCQFN(0404*0.75-0.40)028(C)	QFN(0406*0.55-0.30)056(B)
DFN(0506*0.75-1.27)008-SS2	FCQFN(0404*0.75-0.40)028(D)	QFN(0406*0.55-0.30)056(B)-SS2
DFN(0506*0.85-1.27)008(B)-SS2	FCQFN(0404*0.75-0.40)032(A)	QFN(0406*0.75-0.30)056(A)
DFN(0506*0.85-1.27)008(D)	FCQFN(0404*0.75-0.40)032(B)	QFN(0406*0.75-0.30)056(A)-SD2
DFN(0506*0.85-1.27)008(G)	FCQFN(0404*0.75-0.45)026(A)	QFN(0406*0.75-0.30)056(A)-SIP
DFN(057.8*0.75-1.27)008	FCQFN(0404*0.75-0.50)013(A)	QFN(0406*0.75-0.30)056(A)-SS2



DFN(0602*0.75-0.65)012(A)	FCQFN(0404*0.75-0.50)021(A)	QFN(0406*0.75-0.30)056(A)-SS2
DFN(0608*0.75-1.27)008(A)	FCQFN(0404*0.75-0.50)024	QFN(0406*0.75-0.40)038(A)-SS2
DFN(0608*0.75-1.27)008(A)-SD2	FCQFN(0404*0.85-0.40)023(A)	QFN(0406*0.85-0.30)056(A)
DFN(0608*0.75-1.27)008(A)-SD3	FCQFN(0404*0.85-0.40)026	QFN(0406*0.85-0.30)056(A)-SD2
DFN(0608*0.75-1.27)008(A)-SS2	FCQFN(0404*0.85-0.40)026(B)	QFN(0406*0.85-0.30)056(A)-SIP
DFN(0608*0.75-1.27)008(B)	FCQFN(0404*0.85-0.40)026(C)	QFN(0406*0.90-0.30)056(A)-SD3
DFN(0608*0.75-1.27)008(B)-SD2	FCQFN(0404*0.85-0.40)028	QFN(0406*0.90-0.30)056(A)-SIP
DFN(0608*0.85-1.27)008(A)-SD3	FCQFN(0404*0.85-0.40)028(B)	QFN(0504*0.75-0.50)028(A)
DFN(0808*0.75-2.00)004(A)	FCQFN(0404*0.85-0.40)030(A)	QFN(0504*0.75-0.50)028(A)-SS2
DFN(0808*0.85-2.0)004(B)	FCQFN(0404*0.85-0.50)021(A)	QFN(0505*0.50-0.35)048(C)
DFN(0808*0.85-2.00)004(B)	FCQFN(0404*0.85-0.50)024	QFN(0505*0.55-0.30)056(A)
DFN(0808*0.85-2.00)008(A)	FCQFN(0405*0.75-0.40)022(A)	QFN(0505*0.55-0.35)048
DFN(1.00.5*0.30-0.75)004(A)	FCQFN(0405*0.85-0.40)030(A)	QFN(0505*0.55-0.35)048(B)
DFN(1.00.6*0.40-0.65)002	FCQFN(0505*0.75-0.40)032(A)	QFN(0505*0.55-0.35)048(B)-SS2
DFN(1.00.6*0.40-0.65)002(B)-SS2	FCQFN(0505*0.75-0.40)032(B)	QFN(0505*0.55-0.35)048-SD2
DFN(1.00.6*0.40-0.65)002(C)-SS2	FCQFN(0505*0.75-0.40)035(A)	QFN(0505*0.55-0.35)048-SS2
DFN(1.00.6*0.40-0.65)002(D)	FCQFN(0505*0.75-0.45)032(A)	QFN(0505*0.55-0.40)040
DFN(1.00.6*0.40-0.65)002-SS2	FCQFN(0505*0.75-0.45)034(A)	QFN(0505*0.55-0.40)040-SS2
DFN(1.00.6*0.50-0.65)002	FCQFN(0505*0.75-0.45)036(B)	QFN(0505*0.55-0.50)032(H)
DFN(1.00.6*0.50-0.65)002(B)	FCQFN(0505*0.75-0.65)024	QFN(0505*0.75-0.35)044
DFN(1.00.6*0.50-0.65)002(B)-SS2	FCQFN(0606*0.75-0.35)056(A)	QFN(0505*0.75-0.35)044-SD2
DFN(1.00.6*0.50-0.65)002-SS2	FCQFN(1.51.5*0.55-0.45)007(A)	QFN(0505*0.75-0.40)032
DFN(1.00.6*0.50-0.65)003	FCQFN(1.52.0*0.85-0.50)010(A)	QFN(0505*0.75-0.40)036(A)-SD2



DFN(1.00.6*0.50-0.65)003-SS2	FCQFN(1.81.3*0.55-0.40)012(A)	QFN(0505*0.75-0.40)039(A)-SS3
DFN(1.10.7*0.40-0.40)006(A)	FCQFN(2.02.5*0.55-0.45)012(B)	QFN(0505*0.75-0.40)040
DFN(1.10.7*0.50-0.40)006(C)	FCQFN(2.02.5*0.55-0.50)016(A)	QFN(0505*0.75-0.40)040(B)
DFN(1.10.9*0.50-0.40)006	FCQFN(2.02.5*0.85-0.45)012(A)	QFN(0505*0.75-0.40)040(B)-SD2
DFN(1.20.5*0.30-0.80)004(A)	FCQFN(2.02.5*0.85-0.65)010(A)	QFN(0505*0.75-0.40)040(B)-SIP
DFN(1.21.2*0.40-0.40)006(A)	FCQFN(2.52.5*0.55-0.45)016(A)	QFN(0505*0.75-0.40)040(B)-SS2
DFN(1.30.8*0.40-0.45)005	FCQFN(2.52.5*0.55-0.45)016(D)	QFN(0505*0.75-0.40)040(C)-SD2
DFN(1.30.8*0.40-0.45)006	FCQFN(2.52.5*0.55-0.45)016(E)	QFN(0505*0.75-0.40)040(D)
DFN(1.51.0*0.50-0.50)006(A)	FCQFN(2.53.0*0.85-0.50)012(A)	QFN(0505*0.75-0.40)040(D)-SD2
DFN(1.51.0*0.55-0.50)006(A)	FCQFN(2.53.0*0.85-0.50)014(A)	QFN(0505*0.75-0.40)040-SD2
DFN(1.51.0*0.75-0.50)006	FCQFN(2.53.0*0.85-0.50)015(A)	QFN(0505*0.75-0.40)040-SS2
DFN(1.51.0*0.75-0.50)006(B)	FCQFN(2.53.5*0.85-0.40)022(A)	QFN(0505*0.75-0.40)040-SS3
DFN(1.51.2*0.75-0.50)006(A)	FCQFN(3.53.5*0.85-0.45)026(A)	QFN(0505*0.75-0.40)044(A)
DFN(1.51.5*0.45-0.40)008(B)	FCQFN(3.54.0*0.85-0.40)026(A)	QFN(0505*0.75-0.40)044(B)-SS5
DFN(1.51.5*0.45-0.40)008(B)-SS2	FCQFN(4.55.0*0.75-0.50)030(A)	QFN(0505*0.75-0.40)-3D040
QFN(0505*0.75-0.50)(G)032-SD2	QFN(0707*0.85-0.50)048-SD3	
QFN(0505*0.75-0.50)028	QFN(0707*0.85-0.50)048-SIP	
QFN(0505*0.75-0.50)028(B)	QFN(0707*0.85-0.50)048-SS2	
QFN(0505*0.75-0.50)028(B)-SS2	QFN(0707*0.85-0.50)084(A)	
QFN(0505*0.75-0.50)028(C)-SS4	QFN(0707*0.85-0.50)084(A)-SD2	
QFN(0505*0.75-0.50)028-SD2	QFN(0707*0.85-0.50)084(A)-SD3	
QFN(0505*0.75-0.50)028-SS2	QFN(0707*0.85-0.50)084(A)-SIP	
QFN(0505*0.75-0.50)028-SS3	QFN(0707*0.9-0.50)048-SD2	



QFN(0505*0.75-0.50)029(A)-SS7	QFN(0707*0.90-0.35)068
QFN(0505*0.75-0.50)032	QFN(0707*0.90-0.35)068-SD2
QFN(0505*0.75-0.50)032(C)	QFN(0707*0.90-0.35)068-SD3
QFN(0505*0.75-0.50)032(C)-SD2	QFN(0707*0.90-0.40)060-SD3
QFN(0505*0.75-0.50)032(C)-SS2	QFN(0707*0.90-0.50)048
QFN(0505*0.75-0.50)032(D)-SD2	QFN(0707*0.90-0.50)048(I)
QFN(0505*0.75-0.50)032(E)-SS3	QFN(0708*0.75-0.50)052(A)-SD2
QFN(0505*0.75-0.50)032(F)-SS2	QFN(0808*0.75-0.35)080(A)-SD2
QFN(0505*0.75-0.50)032(F)-SS3	QFN(0808*0.75-0.40)064
QFN(0505*0.75-0.50)032(G)-SD2	QFN(0808*0.75-0.40)064(B)
QFN(0505*0.75-0.50)032(I)	QFN(0808*0.75-0.40)064(B)-SD2
QFN(0505*0.75-0.50)032(M)	QFN(0808*0.75-0.40)064-SD2
QFN(0505*0.75-0.50)032-SD2	QFN(0808*0.75-0.40)064-SIP
QFN(0505*0.75-0.50)032-SIP	QFN(0808*0.75-0.40)064-SS2
QFN(0505*0.75-0.50)032-SS2	QFN(0808*0.75-0.40)068
QFN(0505*0.75-0.50)032-SS3	QFN(0808*0.75-0.40)068(D)
QFN(0505*0.75-0.50)032-SS4	QFN(0808*0.75-0.40)068(D)-SD2
QFN(0505*0.75-0.65)020	QFN(0808*0.75-0.40)068(E)
QFN(0505*0.75-0.65)020(B)	QFN(0808*0.75-0.40)068(E)-SS2
QFN(0505*0.75-0.65)020(C)	QFN(0808*0.75-0.40)068-SD2
QFN(0505*0.75-0.65)020-SS2	QFN(0808*0.75-0.40)068-SS2
QFN(0505*0.75-0.80)016(A)	QFN(0808*0.75-0.40)072(A)-SS2
QFN(0505*0.75-0.80)020(A)-SS3	QFN(0808*0.75-0.40)072(A)-SS3



QFN(0505*0.85-0.30)056(A)	QFN(0808*0.75-0.50)056
QFN(0505*0.85-0.30)056(A)-SD2	QFN(0808*0.75-0.50)056(C)
QFN(0505*0.85-0.35)048	QFN(0808*0.75-0.50)056(C)-SS2
QFN(0505*0.85-0.35)048(B)	QFN(0808*0.75-0.50)056(E)
QFN(0505*0.85-0.35)048(B)-SD2	QFN(0808*0.75-0.65)040(A)
QFN(0505*0.85-0.35)048(B)-SD3	QFN(0808*0.85-0.35)080(A)-SIP
QFN(0505*0.85-0.35)048(B)-SIP	QFN(0808*0.85-0.40)064
QFN(0505*0.85-0.35)048(D)	QFN(0808*0.85-0.40)064(B)
QFN(0505*0.85-0.35)048(D)-SD2	QFN(0808*0.85-0.40)064-SD2
QFN(0505*0.85-0.35)048(D)-SIP	QFN(0808*0.85-0.40)064-SIP
QFN(0505*0.85-0.35)048(D)-SS2	QFN(0808*0.85-0.40)068
QFN(0505*0.85-0.35)048(E)	QFN(0808*0.85-0.40)068(B)
QFN(0505*0.85-0.35)048-SD2	QFN(0808*0.85-0.40)068(B)-SD2
QFN(0505*0.85-0.35)048-SS2	QFN(0808*0.85-0.40)068(C)
QFN(0505*0.85-0.40)040	QFN(0808*0.85-0.40)068(C)-SD2
QFN(0505*0.85-0.40)040(B)-SD2	QFN(0808*0.85-0.40)068(D)-SD2
QFN(0505*0.85-0.40)040(C)-SD2	QFN(0808*0.85-0.40)068-SD2
QFN(0505*0.85-0.40)040(D)	QFN(0808*0.85-0.50)056(D)
QFN(0505*0.85-0.40)040(D)-SD2	QFN(0808*0.85-0.50)056-SD2
QFN(0505*0.85-0.40)040-SD2	QFN(0808*0.85-1.20)020(A)
QFN(0505*0.85-0.40)040-SD3	QFN(0808*0.90-0.35)080(A)-SD2
QFN(0505*0.85-0.40)040-SS2	QFN(0808*0.90-0.35)080(A)-SIP
QFN(0505*0.85-0.40)042(B)	QFN(0808*0.90-0.35)080(A)-SS2





QFN(0505*0.85-0.50)028	QFN(0808*0.90-0.35)080(B)-SD2
QFN(0505*0.85-0.50)028-SD3	QFN(0808*0.90-0.40)064
QFN(0505*0.85-0.50)028-SS2	QFN(0808*0.90-0.40)064(B)
QFN(0505*0.85-0.50)028-SS3	QFN(0808*0.90-0.40)064(B)-SD2
QFN(0505*0.85-0.50)032	QFN(0808*0.90-0.40)064(B)-SIP
QFN(0505*0.85-0.50)032(C)	QFN(0808*0.90-0.40)064-SD2
QFN(0505*0.85-0.50)032(C)-SD2	QFN(0808*0.90-0.40)064-SD3
QFN(0505*0.85-0.50)032(C)-SIP	QFN(0808*0.90-0.40)064-SIP
QFN(0505*0.85-0.50)032(I)	QFN(0808*0.90-0.40)068
QFN(0505*0.85-0.50)032(J)	QFN(0808*0.90-0.40)068(C)-SD2
QFN(0505*0.85-0.50)032(J)-SD2	QFN(0808*0.90-0.40)068-SIP
QFN(0505*0.85-0.50)032(L)-SS5	QFN(0808*0.90-0.65)029(A)-SS3
QFN(0505*0.85-0.50)032(M)	QFN(0808*0.90-0.65)029(A)-SS4
QFN(0505*0.85-0.50)032-SD2	QFN(0808*1.15-0.40)064(B)-SD2
QFN(0505*0.85-0.50)032-SD3	QFN(0808*1.358-1.15)020(A)
QFN(0505*0.85-0.50)032-SIP	QFN(0808*1.358-1.15)020(A)-SS5
QFN(0505*0.85-0.65)020	QFN(0808*1.358-1.15)020(A)-SS6
QFN(0505*0.85-0.80)016(A)	QFN(0808*1.358-1.15)020(A)-SS7
QFN(0505*0.90-0.40)032-SD2	QFN(0808*1.358-1.15)020(A)-SS8
QFN(0505*0.90-0.40)040	QFN(0808*0.90-0.40)068-SIP
QFN(0505*0.90-0.40)040(D)	QFN(0809*0.85-0.40)074(A)-SD2
QFN(0505*0.90-0.40)040-SD2	QFN(0908*0.90-0.65)029(A)-SS4
QFN(0505*0.90-0.40)040-SD3	QFN(0908*0.90-0.65)029(A)-SS6



QFN(0505*0.90-0.50)028(B)	QFN(0909*0.75-0.35)088(A)-SS2
QFN(0505*0.90-0.50)028-SD2	QFN(0909*0.75-0.40)076
QFN(0505*0.90-0.50)028-SS2	QFN(0909*0.75-0.40)076-SD2
QFN(0505*0.90-0.50)032	QFN(0909*0.75-0.40)076-SS2
QFN(0505*0.90-0.50)032(A)	QFN(0909*0.75-0.40)080
QFN(0505*0.90-0.50)032(A)-SD2	QFN(0909*0.75-0.40)080-SD2
QFN(0505*0.90-0.50)032(B)	QFN(0909*0.75-0.40)080-SS2
QFN(0505*0.90-0.50)032(B)-SD2	QFN(0909*0.75-0.50)060
QFN(0505*0.90-0.50)032(C)-SS3	QFN(0909*0.75-0.50)064(C)
QFN(0505*0.90-0.50)032(D)-SD2	QFN(0909*0.75-0.50)064(C)-SD2
QFN(0505*0.90-0.50)032(K)-SS3	QFN(0909*0.75-0.50)064(C)-SS2
QFN(0505*0.90-0.50)032-SD3	QFN(0909*0.75-0.50)064(D)
QFN(0505*0.90-0.50)032-SS3	QFN(0909*0.75-0.50)064(D)-SD2
QFN(0505*0.90-0.50)032-SS4	QFN(0909*0.75-0.50)064(E)
QFN(0505*0.90-0.65)020	QFN(0909*0.75-0.50)064(E)-SD2
QFN(0505X0.85-0.65)020	QFN(0909*0.85-0.4)076-SD2
QFN(0506*0.75-0.40)044(A)	QFN(0909*0.85-0.40)076
QFN(0506*0.75-0.40)044(B)	QFN(0909*0.85-0.40)076(C)
QFN(0506*0.75-1.0)010(A)-SS3	QFN(0909*0.85-0.40)076(C)-SS2
QFN(0506*0.75-1.0)010(A)-SS4	QFN(0909*0.85-0.40)076(D)
QFN(0506*0.75-1.00)010(B)-SS3	QFN(0909*0.85-0.40)076-SD2
QFN(0506*0.85-0.40)044(C)-SS2	QFN(0909*0.85-0.40)076-SD3
QFN(0506*0.90-0.65)014(A)-SS3	QFN(0909*0.85-0.40)080



QFN(0509*0.75-0.40)060	QFN(0909*0.85-0.40)080(B)-SD2
QFN(0509*0.75-0.40)060(B)-SD2	QFN(0909*0.85-0.40)080(B)-SIP
QFN(0509*0.75-0.40)060-SD2	QFN(0909*0.85-0.40)080-SD2
QFN(0509*0.85-0.40)060(B)	QFN(0909*0.85-0.40)080-SIP
QFN(0509*0.90-0.40)060(B)-SD2	QFN(0909*0.85-0.50)064(C)
QFN(0509*0.90-0.40)060-SD2	QFN(0909*0.85-0.50)064(C)-SD2
QFN(0604*0.85-0.35)050(A)-SD2	QFN(0909*0.85-0.50)064(F)
QFN(0604*0.85-0.35)050(A)-SIP	QFN(0909*0.85-0.50)064(F)-SD2
QFN(0606*0.50-0.35)060(A)	QFN(0909*0.85-0.50)064(G)
QFN(0606*0.50-0.80)020	QFN(0909*0.90-0.35)088(A)
QFN(0606*0.55-0.30)068(A)-SS2	QFN(0909*0.90-0.35)088(A)-SD2
QFN(0606*0.55-0.35)056	QFN(0909*0.90-0.35)088(A)-SD3
QFN(0606*0.55-0.35)056(B)	QFN(0909*0.90-0.35)088(A)-SIP
QFN(0606*0.55-0.35)056(B)-SD2	QFN(0909*0.90-0.35)088(B)-SD3
QFN(0606*0.55-0.35)056(B)-SS2	QFN(0909*0.90-0.40)076(B)-SD2
QFN(0606*0.55-0.35)056-SS2	QFN(0909*0.90-0.40)076-SD2
QFN(0606*0.55-0.35)060(A)	QFN(0909*0.90-0.40)080-SD2
QFN(0606*0.55-0.35)060(A)-SS2	QFN(0909*0.90-0.40)080-SS2
QFN(0606*0.55-0.35)060(B)-SS2	QFN(0909*0.90-0.50)064(C)
QFN(0606*0.55-0.40)048	QFN(0909*0.90-0.50)064(C)-SIP
QFN(0606*0.55-0.40)048-SD2	QFN(0909*1.15-0.40)076(B)-SD2
QFN(0606*0.55-0.40)052	QFN(1.11.1*0.55-0.40)008(A)
QFN(0606*0.55-0.40)052-SS2	QFN(1.51.5*0.55-0.50)006(A)



QFN(0606*0.75-0.35)056	QFN(1.61.6*0.30-0.40)012
QFN(0606*0.75-0.35)056-SD2	QFN(1.61.6*0.75-0.40)012
QFN(0606*0.75-0.40)048	QFN(1010*0.75-0.35)096
QFN(0606*0.75-0.40)048(B)	QFN(1010*0.75-0.35)096(B)
QFN(0606*0.75-0.40)048(B)-SD2	QFN(1010*0.75-0.35)096(B)
QFN(0606*0.75-0.40)048(D)	QFN(1010*0.75-0.35)096(B)-SS2
QFN(0606*0.75-0.40)048(F)	QFN(1010*0.75-0.35)096-SD2
QFN(0606*0.75-0.40)048(F)-SS2	QFN(1010*0.75-0.40)088
QFN(0606*0.75-0.40)048(H)	QFN(1010*0.75-0.40)088(C)-SS2
QFN(0606*0.75-0.40)048-SD2	QFN(1010*0.75-0.40)088-SD2
QFN(0606*0.75-0.40)048-SIP	QFN(1010*0.75-0.40)088-SIP
QFN(0606*0.75-0.40)048-SS2	QFN(1010*0.75-0.40)088-SS2
QFN(0606*0.75-0.40)048-SS5	QFN(1010*0.85-0.35)096(B)-SD2
QFN(0606*0.75-0.40)048-SS6	QFN(1010*0.85-0.35)096(B)-SIP
QFN(0606*0.75-0.40)052	QFN(1010*0.85-0.35)096-SD2
QFN(0606*0.75-0.40)052(B)-SS4	QFN(1010*0.85-0.35)096-SIP
QFN(0606*0.75-0.40)052(B)-SS5	QFN(1010*0.85-0.40)088
QFN(0606*0.75-0.40)052-SD2	QFN(1010*0.85-0.40)088(B)
QFN(0606*0.75-0.40)052-SIP	QFN(1010*0.85-0.40)088(B)-SD2
QFN(0606*0.75-0.40)052-SS2	QFN(1010*0.85-0.40)088(B)-SIP
QFN(0606*0.75-0.50)015-SS4	QFN(1010*0.85-0.40)088(B)-SS2
QFN(0606*0.75-0.50)034(B)-SS7	QFN(1010*0.85-0.40)088(D)
QFN(0606*0.75-0.50)036	QFN(1010*0.85-0.40)088(D)-SD2



QFN(0606*0.75-0.50)036(C)	QFN(1010*0.85-0.40)088(E)
QFN(0606*0.75-0.50)036-SS2	QFN(1010*0.85-0.40)088(E)-SD2
QFN(0606*0.75-0.50)040	QFN(1010*0.85-0.40)088-SD2
QFN(0606*0.75-0.50)040(B)-SS3	QFN(1010*0.85-0.40)088-SIP
QFN(0606*0.75-0.50)040(B)-SS7	QFN(1010*0.85-0.40)088-SS2
QFN(0606*0.75-0.50)040(D)	QFN(1010*0.85-0.50)072
QFN(0606*0.75-0.50)040(D)-SS2	QFN(1010*0.85-0.50)072(B)
QFN(0606*0.75-0.50)040(D)-SS4	QFN(1010*0.85-0.50)072(B)-SS2
QFN(0606*0.75-0.50)040-SD2	QFN(1010*0.85-0.50)116(A)-SS2
QFN(0606*0.75-0.50)040-SS2	QFN(1010*0.85-0.50)116(B)
QFN(0606*0.75-0.50)040-SS3	QFN(1010*0.85-0.50)132(A)
QFN(0606*0.75-0.50)040-SS4	QFN(1010*0.90-0.35)096
QFN(0606*0.75-0.65)028(A)	QFN(1010*0.90-0.35)096(C)-SIP
QFN(0606*0.75-0.80)020	QFN(1010*0.90-0.35)096-SIP
QFN(0606*0.85-0.35)056	QFN(1010*0.90-0.40)088
QFN(0606*0.85-0.35)060(A)	QFN(1010*0.90-0.40)088(D)-SD2
QFN(0606*0.85-0.35)060(A)-SD2	QFN(1010*0.90-0.40)088-SD2
QFN(0606*0.85-0.40)047(A)-SIP	QFN(1010*0.90-0.40)088-SD3
QFN(0606*0.85-0.40)048	QFN(1010*0.90-0.40)088-SIP
QFN(0606*0.85-0.40)048(D)	QFN(1111*0.65-0.40)072
QFN(0606*0.85-0.40)048(D)-SD2	QFN(1212*0.65-0.60)019(A)
QFN(0606*0.85-0.40)048(E)	QFN(1212*0.75-0.35)112(A)
QFN(0606*0.85-0.40)048(E)-SD2	QFN(1212*0.75-0.40)100(A)



QFN(0606*0.85-0.40)048(F)	QFN(1212*0.75-0.50)020
QFN(0606*0.85-0.40)048(G)	QFN(1212*0.75-0.50)088(A)
QFN(0606*0.85-0.40)048(G)-SD2	QFN(1212*0.85-0.35)124(A)
QFN(0606*0.85-0.40)048(H)-SD2	QFN(1212*0.85-0.35)124(A)-SS3
QFN(0606*0.85-0.40)048-SD2	QFN(1212*0.85-0.50)088(A)
QFN(0606*0.85-0.40)048-SD3	QFN(1212*0.85-0.50)148(A)
QFN(0606*0.85-0.40)048-SIP	QFN(1212*0.85-0.50)148(A)-SD2
QFN(0606*0.85-0.40)052	QFN(1212*0.85-0.50)148(A)-SIP
QFN(0606*0.85-0.40)052-SD2	QFN(1212*0.85-0.50)148(A)-SS2
QFN(0606*0.85-0.40)052-SD3	QFN(1212*0.85-0.50)156(A)
QFN(0606*0.85-0.40)052-SIP	QFN(1212*0.90-0.35)112(A)-SD2
QFN(0606*0.85-0.50)034(A)-SS8	QFN(2.05.5*0.75-0.40)032(A)
QFN(0606*0.85-0.50)036	QFN(2.32.3*0.30-0.40)016
QFN(0606*0.85-0.50)036-SD2	QFN(2.32.3*0.30-0.40)016-SS2
QFN(0606*0.85-0.50)040	QFN(2.32.3*0.55-0.40)016(A)
QFN(0606*0.85-0.65)028(A)	QFN(2.32.3*0.55-0.40)016(A)-SS2
QFN(0606*0.90-0.40)048	QFN(2.52.5*0.40-0.50)016(B)
QFN(0606*0.90-0.40)048-SD3	QFN(2.52.5*0.40-0.50)016(B)-SS2
QFN(0606*0.90-0.40)048-SIP	QFN(2.52.5*0.40-0.50)016(C)-SS2
QFN(0606*0.90-0.50)036	QFN(2.52.5*0.40-0.50)016(C)-SS3
QFN(0606*0.90-0.50)040	QFN(2.52.5*0.40-0.50)016(D)
QFN(0606*0.90-0.70)028(A)-SS4	QFN(2.52.5*0.40-0.50)016(D)-SS2
QFN(0606*0.90-0.70)028(A)-SS6	QFN(2.52.5*0.55-0.4)020(A)



QFN(0609*1.00-1.30)008(A)-SS3	QFN(2.52.5*0.55-0.50)016
QFN(0609*1.00-1.30)008(A)-SS7	QFN(2.52.5*0.55-0.50)016-SS2
QFN(0707*0.50-0.40)056	QFN(2.52.5*0.55-0.50)016-SS3
QFN(0707*0.55-0.35)068	QFN(2.52.5*0.75-0.40)016
QFN(0707*0.75-0.35)029	QFN(2.52.5*0.75-0.50)014(A)
QFN(0707*0.75-0.35)068	QFN(2.52.5*0.75-0.50)016(B)
QFN(0707*0.75-0.35)068-SD2	QFN(2.52.5X0.40-0.50)016(B)-SS2
QFN(0707*0.75-0.35)068-SS2	QFN(3.02.5*0.75-0.40)022(A)-SD2
QFN(0707*0.75-0.40)056	QFN(3.02.5*0.75-0.40)022(A)-SD3
QFN(0707*0.75-0.40)056(B)-SS2	QFN(3.02.5*0.75-0.40)022(A)-SS2
QFN(0707*0.75-0.40)056-SD2	QFN(3.04.5*0.75-0.40)028(A)
QFN(0707*0.75-0.40)056-SIP	QFN(3.04.5*0.75-0.40)028(A)-SD2
QFN(0707*0.75-0.40)056-SS2	QFN(3.33.3*0.90-0.40)024(A)-SIP
QFN(0707*0.75-0.40)060	QFN(3.5.3.5*0.75-0.40)024(A)
QFN(0707*0.75-0.40)060(B)	QFN(3.53.0*0.75-0.40)024(A)
QFN(0707*0.75-0.40)060-SD2	QFN(3.53.5*0.75-0.40)024(A)-SD2
QFN(0707*0.75-0.40)060-SS2	QFN(3.53.5*0.85-0.50)014(A)
QFN(0707*0.75-0.40)060-SS3	QFN(3.53.5*0.85-0.50)020(A)
QFN(0707*0.75-0.50)048	QFN(3.53.5*0.90-0.50)014(A)
QFN(0707*0.75-0.50)048(D)-SIP	QFN(3.53.5*0.90-0.50)020(A)
QFN(0707*0.75-0.50)048(F)	QFN(3.59.0*0.75-0.50)042(A)
QFN(0707*0.75-0.50)048(G)-SD2	QFN(3.59.0*0.75-0.50)042(A)-SS2
QFN(0707*0.75-0.50)048(H)-SS5	QFN(4.06.5*0.85-0.40)044(A)-SIP



QFN(0707*0.75-0.50)048(I)	QFN(4.53.5*0.75-0.50)024
QFN(0707*0.75-0.50)048(I)-SS2	QFN(4.54.5*0.55-0.30)048
QFN(0707*0.75-0.50)048(J)	QFN(4.54.5*0.85-0.35)040(A)-SD2
QFN(0707*0.75-0.50)048(K)	QFN(5.07.5*0.75-0.40)052(A)-SS2
QFN(0707*0.75-0.50)048(L)-SD2	QFN(5.507*0.75-0.40)050(C)
QFN(0707*0.75-0.50)048-SD2	QFN(5.507*0.85-0.40)050(C)
QFN(0707*0.75-0.50)048-SIP	QFN(5.54.5*0.75-0.40)038
QFN(0707*0.75-0.50)048-SS2	QFN(5.54.5*0.75-0.40)040(A)
QFN(0707*0.75-0.50)048-SS3	QFN(5.54.5*0.85-0.40)038
QFN(0707*0.75-1.00)020	QFN(5.54.5*0.85-0.40)040(A)
QFN(0707*0.75-1.00)020(B)	QFN(5.55.5*0.75-0.40)040-SD2
QFN(0707*0.85-0.35)064(A)-SD2	QFN(5.55.5*0.75-0.40)040-SS2
QFN(0707*0.85-0.35)068	QFN(5.64.6*0.90-0.35)048(A)-SD3
QFN(0707*0.85-0.35)068-SD2	QFN(5.85.0*0.75-0.35)048(A)
QFN(0707*0.85-0.35)068(B)-SIP	QFN(5.85.0*0.75-0.35)048(A)-SIP
QFN(0707*0.85-0.35)068(B)-SS2	QFN(5.85.0*0.75-0.35)048(A)-SS5
QFN(0707*0.85-0.35)068-SD2	QFN(5.85.0*0.75-0.35)048(A)-SS6
QFN(0707*0.85-0.35)068-SIP	QFN(6.44.0*0.85-0.35)050(A)-SIP
QFN(0707*0.85-0.35)068-SS2	QFN(6.44.0*0.90-0.35)050(A)-SIP
QFN(0707*0.85-0.40)056	QFN(6.54.5*0.75-0.40)046
QFN(0707*0.85-0.40)056(B)	QFN(6.54.5*0.75-0.40)046-SS2
QFN(0707*0.85-0.40)056-SD2	QFN(6.54.5*0.85-0.40)046-SS5
QFN(0707*0.85-0.40)060(B)	QFN(6.56.5*0.85-0.50)072





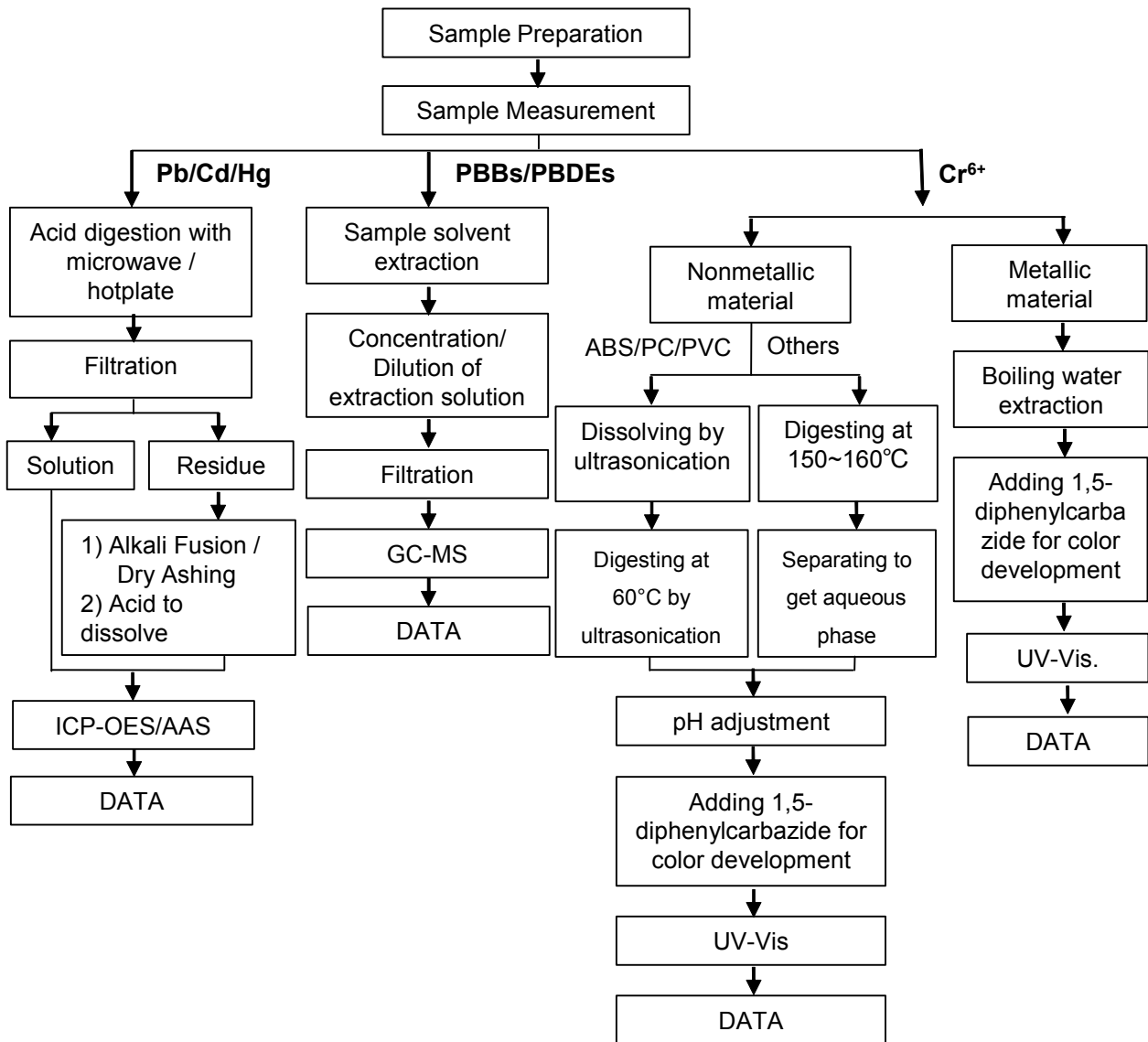
QFN(0707*0.85-0.40)060(D)	QFN(7.35.8*0.85-0.40)056(A)-SD2
QFN(0707*0.85-0.40)060-SD2	QFN(7.35.8*0.85-0.40)056(A)-SIP
QFN(0707*0.85-0.50)048	QFN(7.57.5*0.75-0.40)064
QFN(0707*0.85-0.50)048(I)	VQFN(1111*0.50-0.40)256
QFN(0707*0.85-0.50)048(I)-SS2	VQFN(1212*0.85-0.50)148
QFN(0707*0.85-0.50)048-SD2	



ATTACHMENTS

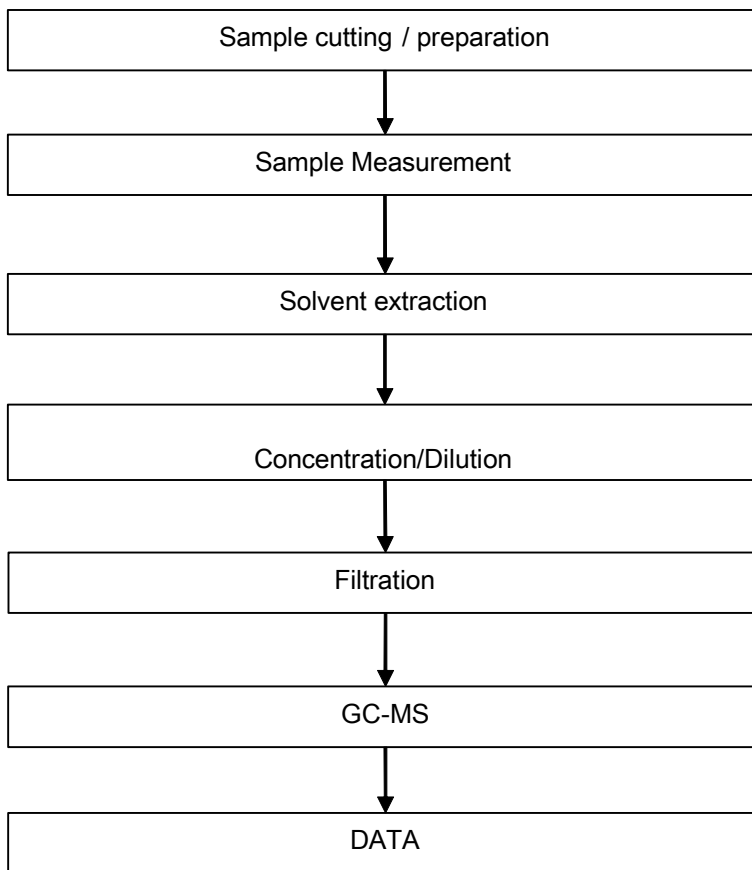
**Pb/Cd/Hg/Cr<sup>6+</sup>/PBBs/PBDEs Testing Flow Chart**

1) These samples were dissolved totally by pre-conditioning method according to below flow chart. (Cr<sup>6+</sup> and PBBs/PBDEs test method excluded).



ATTACHMENTS

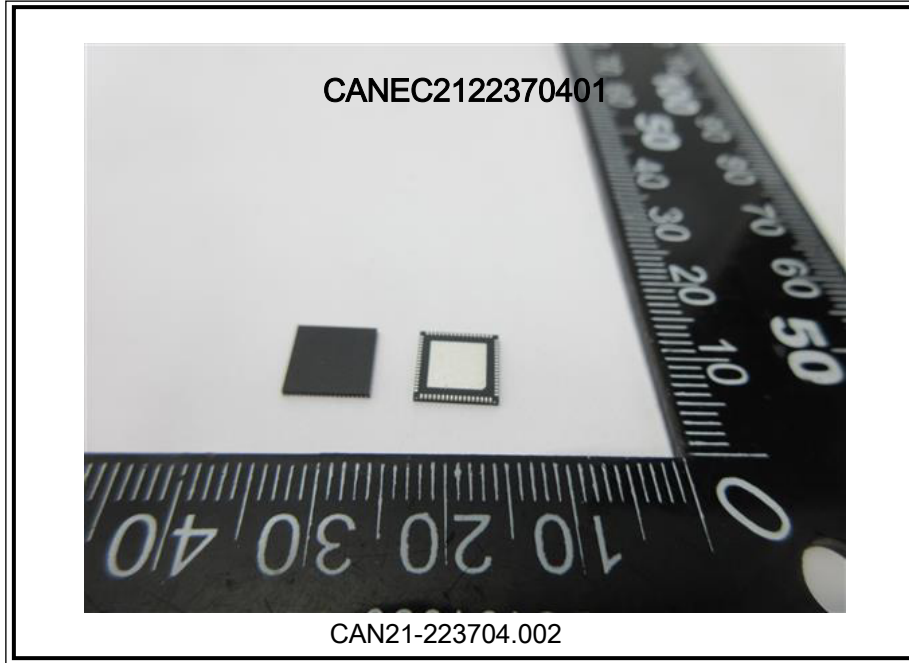
Phthalates Testing Flow Chart



Unless otherwise agreed in writing, this document is issued by the Company subject to its General Conditions of Service printed overleaf, available on request or accessible at <http://www.sgs.com/en/Terms-and-Conditions.aspx> and, for electronic format documents, subject to Terms and Conditions for Electronic Documents at <http://www.sgs.com/en/Terms-and-Conditions/Terms-e-Documents.aspx>. Attention is drawn to the limitation of liability, indemnification and jurisdiction issues defined therein. Any holder of this document is advised that information contained hereon reflects the Company's findings at the time of its intervention only and within the limits of Client's instructions, if any. The Company's sole responsibility is to its Client and this document does not exonerate parties to a transaction from exercising all their rights and obligations under the transaction documents. This document cannot be reproduced except in full, without prior written approval of the Company. Any unauthorized alteration, forgery or falsification of the content or appearance of this document is unlawful and offenders may be prosecuted to the fullest extent of the law. Unless otherwise stated the results shown in this test report refer only to the sample(s) tested.

Attention: To check the authenticity of testing / inspection report & certificate, please contact us at telephone: (86-755) 8307 1443, or email: [CN.Doccheck@sgs.com](mailto:CN.Doccheck@sgs.com)

Sample photo:



SGS authenticate the photo on original report only

\*\*\* End of Report \*\*\*

